

# PRODUCT CATALOGUE

Products for Aviation Applications

- Filter Vessels -

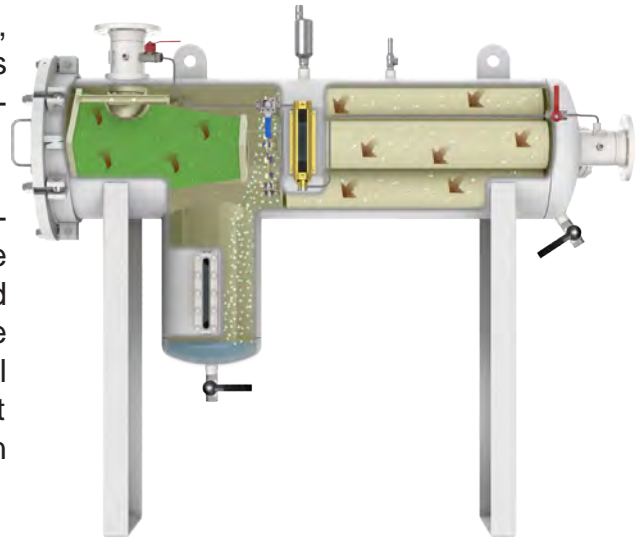
# Filter Water Separator

# FW6 Series

## Applications

For stationary installations at refineries, fuel storages, marine depots, as well as tank farms, according to EI 1581 5<sup>th</sup> Edition, Category C, Type S.

FAUDI Aviation Filter Water Separator Vessels are designed and built in accordance with the strict engineering guidelines and pressure vessel regulation of AD-2000. The design according to other pressure vessel regulations like ASME code with or without u-stamp, BS, GOST-R, etc., is possible on customer request.



## Technical Details

- For stationary applications
- Suitable for Jet A1, Jet A, other fluids on request
- Vessel material acc. to customer request (carbon steel, stainless steel or aluminium)
- Maximal flow rates up to 4,680 l/min
- Max. 15 ppm free water in the outlet stream
- Max. 0.26 mg/l (average) particles in the outlet stream

## Sample Identification

Series FW6-2 Quantity of coalescer elements

Type	Coalescer Element		Separator-Element		Maximale Flow Rate		Volume ≈ l	Weight* ≈ kg
	Model	Qty.	Model	Qty.	Jet-A, Jet-A1			
					l/min	USGPM		
FW6- 2	P.3-842	2	300 62 12	1	720	190	≈ 160	≈ 235
FW6- 3	P.3-842	3	300 63 80	1	1,080	285	≈ 210	≈ 275
FW6- 4	P.3-842	4	300 62 75	1	1,440	380	≈ 270	≈ 350
FW6- 5	P.3-842	5	300 63 36	1	1,800	475	≈ 340	≈ 400
FW6- 7	P.3-842	7	300 63 37	1	2,520	665	≈ 440	≈ 495
FW6- 8	P.3-842	8	300 62 74	1	2,880	760	≈ 525	≈ 540
FW6- 9	P.3-842	9	300 63 38	1	3,240	855	≈ 610	≈ 650
FW6-11	P.3-842	11	300 63 39	1	3,960	1,046	≈ 670	≈ 715
FW6-13	P.3-842	13	300 63 40	1	4,680	1,236	≈ 740	≈ 895

\* design in carbon- or stainless steel

FAUDI Aviation GmbH      Phone:      +49 6428 4465-275  
 Scharnhorststrasse 7 B      Fax:      +49 6428 4465-231  
 D-35260 Stadtallendorf      E-Mail:      contact@faudi-aviation.com  
 Germany      Web:      www.faudi-aviation.com

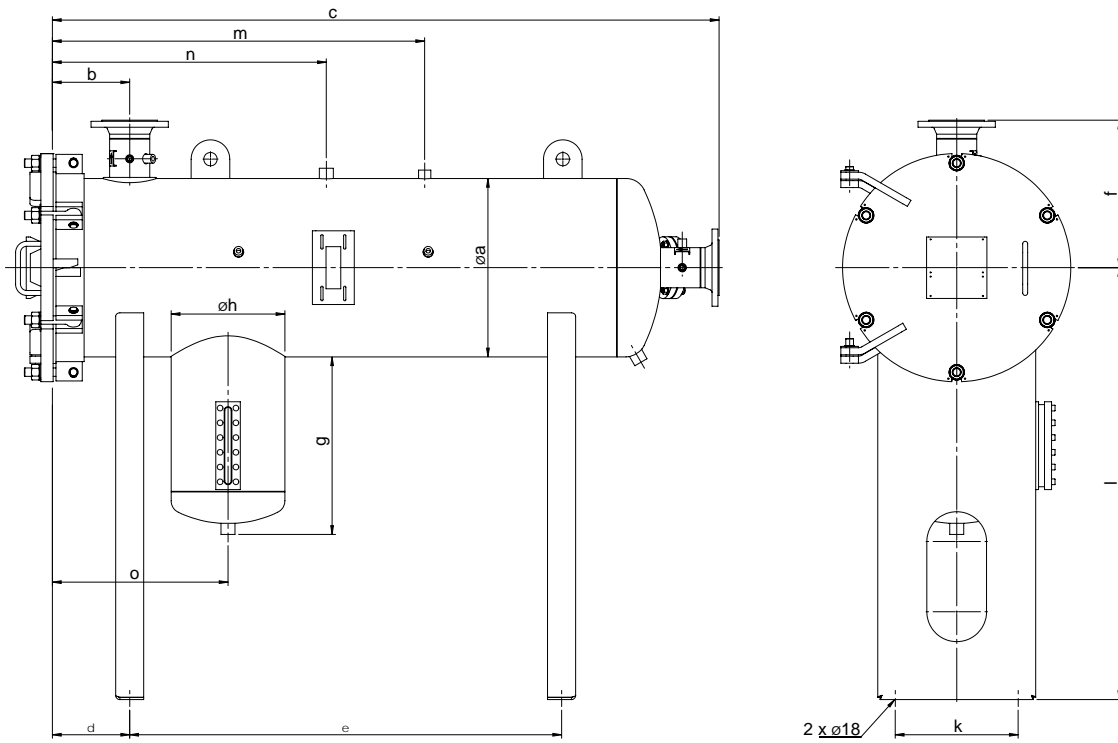


## FW6 Series

### Standard Design

- Material in carbon- or stainless steel
- Cover installation with hinge (left) and swing bolts
- AD-2000 module H
- Design pressure: 16 bar
- Water Level Indicator (Z-3.5)
- Connections for:
  - Automatic air eliminator
  - Differential pressure measuring device (4-point)
  - Pressure relief valve
  - Sample probe connections on outlet and inlet

### Dimensions in mm for carbon steel vessel standard



minor dimension divergences reserved!

Model No.	Connections		Dimensions in mm												
	DIN	ANSI	Ø a	b	c	d	e	f	g	Ø h	k	l	m	n	o
FW6- 2	DN 80	3"	356	220	1,666	220	1,050	340	~505	324	200	1,230	960	680	500
FW6- 3	DN 100	4"	406	220	1,771	220	1,110	370	~505	324	250	1,230	1,040	760	500
FW6- 4	DN 100	4"	457	220	1,856	220	1,200	397	~505	324	300	1,230	1,080	800	500
FW6- 5	DN 100	4"	508	220	1,909	220	1,230	422	~505	324	350	1,230	1,060	780	500
FW6- 7	DN 150	6"	559	330	2,086	220	1,400	462	~505	324	400	1,230	1,180	880	500
FW6- 8	DN 150	6"	610	330	2,074	220	1,370	487	~505	324	450	1,230	1,250	950	500
FW6- 9	DN 150	6"	660	330	2,082	220	1,370	511	~505	324	500	1,300	1,250	950	500
FW6-11	DN 150	6"	711	320	2,026	220	1,310	541	~505	324	550	1,300	1,200	900	500
FW6-13	DN 200	8"	750	400	2,124	220	1,380	565	~505	324	600	1,300	1,300	1,000	500

**FAUDI Aviation GmbH** Phone: +49 6428 4465-275  
 Scharnhorststrasse 7 B Fax: +49 6428 4465-231  
 D-35260 Stadtallendorf E-Mail: contact@faudi-aviation.com  
 Germany Web: www.faudi-aviation.com

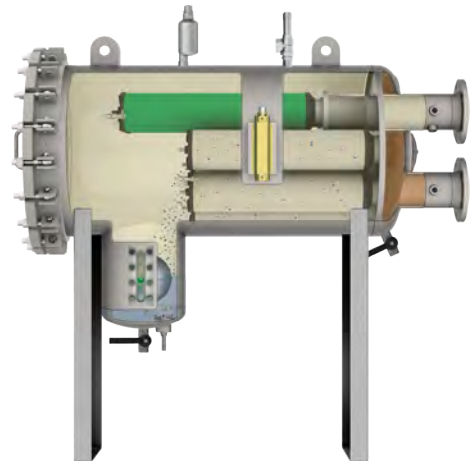


# FW10-H-Series

## Applications

For stationary installations at refineries, fuel storages, marine depots, as well as tank farms, according to EI 1581 5<sup>th</sup> Edition, Category C, Type S

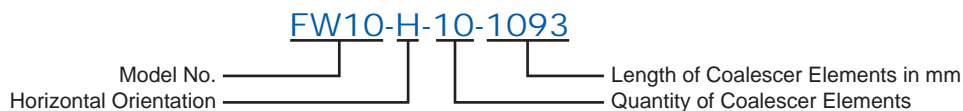
FAUDI Aviation Filter Water Separator Vessels are designed and built in accordance with the strict engineering guidelines and pressure vessel regulation of AD-2000. The design according to other pressure vessel regulations like ASME code with or without u-stamp, BS, GOST-R, etc., is possible on customer request.



## Technical Details

- For stationary applications
- Suitable for Jet A1, Jet A, other fluids on request
- Vessel material acc. to customer request (carbon steel, stainless steel or aluminium)
- Maximal flow rates up to 9,500 l/min
- Max. 15 ppm free water in the outlet stream
- Max. 0,26 mg/l (average) particles in the outlet stream

## Sample Identification



Type	Coalescer Element		Separator Element		max. Flow Rate	
	Model	Qty.	Model	Qty.	l/min	USGPM
FW10-H- 2/ 559	P.4- 559	2	60.644- 565	1	470	124
FW10-H- 3/ 559	P.4- 559	3	60.644- 565	1	705	186
FW10-H- 3/ 842	P.4- 842	3	60.644- 565	1	1,110	293
FW10-H- 3/1093	P.4-1093	3	60.644-1093	1	1,520	401
FW10-H- 4/1093	P.4-1093	4	60.644- 842	2	2,000	528
FW10-H- 5/1422	P.4-1422	5	60.644-1093	2	3,200	845
FW10-H- 7/1422	P.4-1422	7	60.644-1093	3	4,200	1,109
FW10-H- 8/1422	P.4-1422	8	60.644-1188	3	5,200	1,373
FW10-H-10/1422	P.4-1422	10	60.644-1188	4	6,500	1,717
FW10-H-11/1422	P.4-1422	11	60.644-1188	5	7,200	1,902
FW10-H-12/1422	P.4-1422	12	60.644-1188	5	7,850	2,073
FW10-H-13/1422	P.4-1422	13	60.644-1188	5	8,500	2,245
FW10-H-17/1422	P.4-1422	17	60.644-1290	7	9,500	2,509

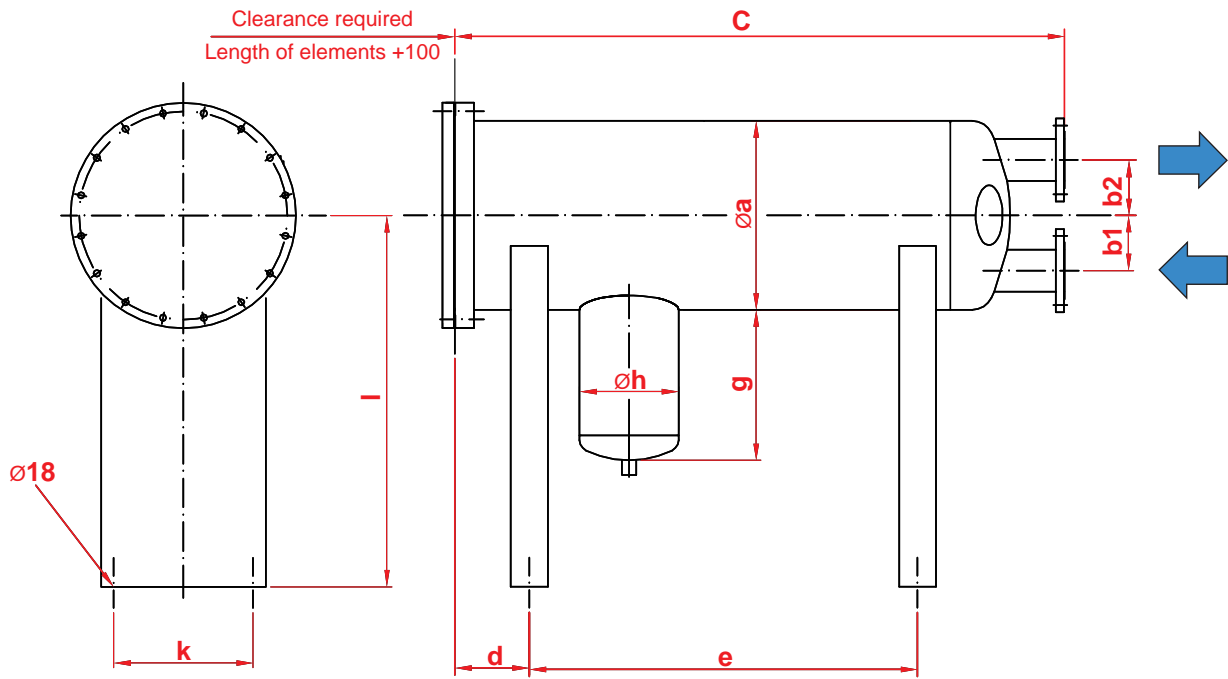
FAUDI Aviation GmbH      Phone:      +49 6428 4465-275  
 Scharnhorststrasse 7 B      Fax:      +49 6428 4465-231  
 D-35260 Stadtallendorf      E-Mail:      contact@faudi-aviation.com  
 Germany      Web:      www.faudi-aviation.com



# FW10-H Series

## Standard Design

- Made in carbon steel
- Cover installation with hinge (left) and swing bolts
- Design in AD-2000 module H
- Design pressure: 16 bar
- Water Level Indicator (Z-3.5)
- Connections for:
  - Automatic air eliminator
  - Pressure relief valve
  - Differential pressure measuring device (4-point)
  - Sample probe connections on outlet and inlet



Type	Connections		Dimensions									Volume (approx.) l	Weight* (approx.) kg	
	DIN	ANSI	ø a	b1	b2	c	d	e	g	ø h	k			l
FW10-H- 2/ 559														
FW10-H- 3/ 559														
FW10-H- 3/ 842														
FW10-H- 3/1093														
FW10-H- 4/1093														
FW10-H- 5/1422														
FW10-H- 7/1422														
FW10-H- 8/1422														
FW10-H-10/1422														
FW10-H-11/1422														
FW10-H-12/1422														
FW10-H-13/1422														
FW10-H-17/1422														

on request

\* Ausführung in C-Stahl

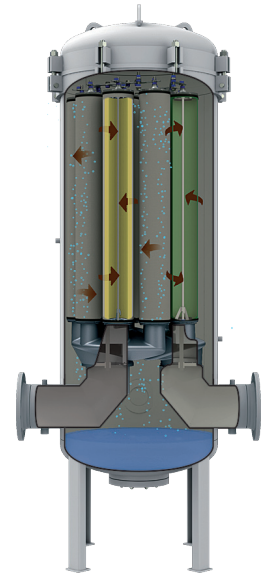
FAUDI Aviation GmbH Scharnhorststrasse 7 B D-35260 Stadtallendorf Germany	Phone: +49 6428 4465-275 Fax: +49 6428 4465-231 E-Mail: contact@faudi-aviation.com Web: www.faudi-aviation.com	<p><b>FAUDI</b> aviation quality guarantees safety</p>
--	---	--

# FW10-V Series

## Applications

For stationary installations at refineries, fuel storages, marine depots, as well as tank farms, according to EI 1581 5<sup>th</sup> Edition, Category C, Type S

FAUDI Aviation Filter Water Separator Vessels are designed and built in accordance with the strict engineering guidelines and pressure vessel regulation of AD-2000. The design according to other pressure vessel regulations like ASME code with or without u-stamp, BS, GOST-R, etc., is possible on customer request.

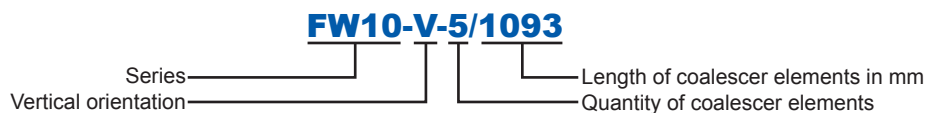


# FILTER WATER SEPARATOR

## Technical Details

- For stationary applications
- Suitable for Jet A1, Jet A, other fluids on request
- Vessel material acc. to customer request (carbon steel, stainless steel or aluminium)
- Maximal flow rates up to 8.550 l/min
- Max. 15 ppm free water in the outlet stream
- Max. 0,26 mg/l (average) particles in the outlet stream

## Sample Identification



Type	Separator Element		max. Flow Rate	
	Model	Qty	l/min	USGPM
FW10-V- 3/ 559	60.677- 565	1	640	169
FW10-V- 3/ 727	60.677- 727	1	840	222
FW10-V- 3/ 842	60.677- 727	1	960	254
FW10-V- 5/ 727	60.677- 727	2	1,400	370
FW10-V- 5/ 842	60.677- 727	2	1,680	444
FW10-V- 9/ 727	60.677- 727	3	2,500	660
FW10-V- 9/ 965	60.677- 727	3	3,000	792
FW10-V- 9/1093	60.677-1093	3	4,000	1,057

Type	Separator Element		max. Flow Rate	
	Model	Qty.	l/min	USGPM
FW10-V-12/ 965	60.677- 900	5	4,335	1,145
FW10-V- 9/1422	60.677-1093	3	4,500	1,189
FW10-V-12/1093	60.677- 900	5	5,500	1,453
FW10-V-12/1422	60.677-1188	5	6,500	1,717
FW10-V-12/1422	60.677-1188	6	7,100	1,876
FW10-V-14/1422	60.677-1188	6	8,150	2,153
FW10-V-15/1422	60.677-1188	6	8,750	2,312
FW10-V-16/1422	60.677-1188	6	9,500	2,510

FAUDI Aviation GmbH  
 Scharnhorststrasse 7 B  
 D-35260 Stadtallendorf  
 Germany

Phone: +49 6428 4465-275  
 Fax: +49 6428 4465-231  
 E-Mail: [contact@faudi-aviation.com](mailto:contact@faudi-aviation.com)  
 Web: [www.faudi-aviation.com](http://www.faudi-aviation.com)

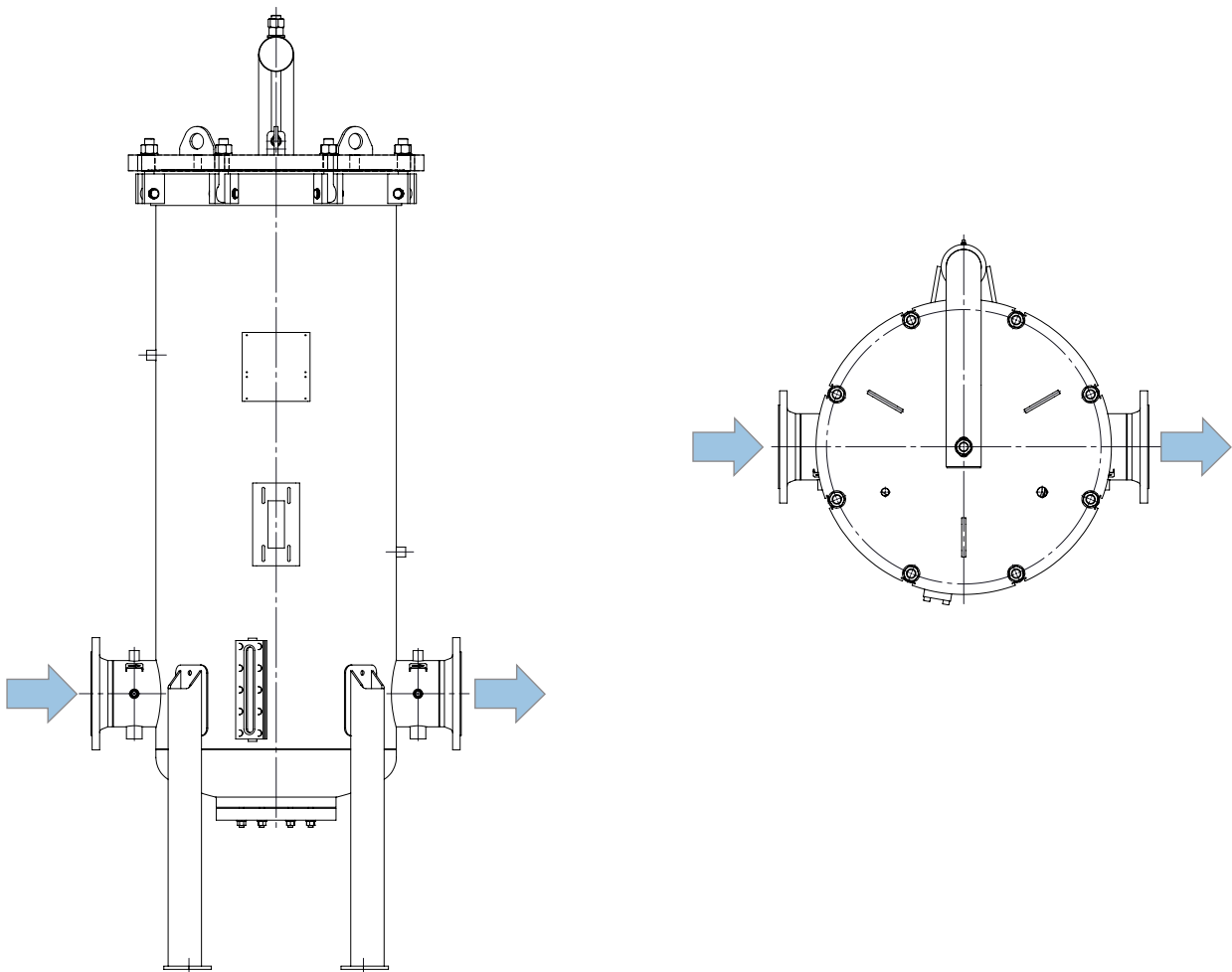



## FW10-V Series

### Standard Design

- Material in carbon steel
- Cover installation with cover lifting device and swing bolts
- AD-2000 module H
- Design pressure: 16 bar
- Water Level Indicator (Z-3.5)
- Connections for:
  - Automatic air eliminator
  - Pressure relief valve
  - Differential pressure measuring device (4-point)
  - Sample probe connections on outlet and inlet

### Dimensions in mm



FAUDI Aviation GmbH Scharnhorststrasse 7 B D-35260 Stadtallendorf Germany	Phone: +49 6428 4465-275 Fax: +49 6428 4465-231 E-Mail: <a href="mailto:contact@faudi-aviation.com">contact@faudi-aviation.com</a> Web: <a href="http://www.faudi-aviation.com">www.faudi-aviation.com</a>	 <p><b>FAUDI</b> aviation quality guarantees safety</p>
--	---	--

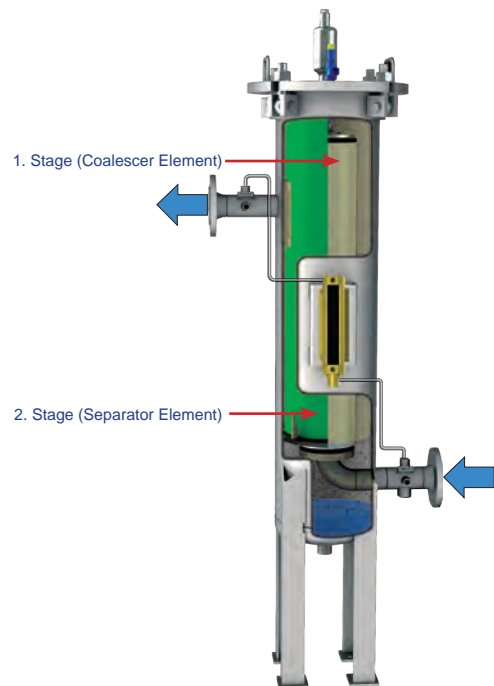


# FW9-S Series

## Applications

For stationary and mobile installations at refineries, fuel storages, marine depots, as well as tank farms, according to EI 1581 5<sup>th</sup> Edition, Category C, Type S

FAUDI Aviation Filter Water Separator Vessels are designed and built in accordance with the strict engineering guidelines DGRL 97/23/EG and pressure vessel regulation of AD-2000. The design according to other pressure vessel regulations like ASME code with or without U-Stamp, BS, GOST-R, etc., is possible on customers request.



# FILTER WATER SEPARATOR

## Technical Details

- For mobile and stationary applications
- Tested and approved acc. to EI 1581 5th edition, Cat. C, Type S
- Suitable for Jet A1, Avgas and other fluids on request
- Maximal flow rates up to 330 l/min
- Max. 15 ppm free water in the outlet
- Max. 0,26 mg/l (average) particles in the outlet

## Sample Identification

FW9-S-1/727

Series \_\_\_\_\_ Length of Coalescer Element in mm

Type	Coalescer Element		Separator Element		Maximum Flow Rate		Volume ≈ l	Weight ≈ kg <sup>1</sup>
	Model	Qty.	Model	Qty.	Jet-A, Jet-A1 Cat. C, Type S	l/min		
FW9-S-1/362	P.3-362	1	FW9-S-1(362)	1	134	35	40	95
FW9-S-1/467	P.3-467	1	FW9-S-1(467)	1	177	46	45	95
FW9-S-1/565	P.3-559	1	FW9-S-1(565)	1	217	57	50	100
FW9-S-1/727	P.3-727	1	FW9-S-1(727)	1	283	74	60	100
FW9-S-1/842	P.3-842	1	FW9-S-1(842)	1	330	87	65	110

<sup>1</sup>Design in Stainless Steel acc. to AD-2000 or ASME code

FAUDI Aviation GmbH      Phone: +49 6428 4465-275  
 Scharnhorststrasse 7 B      Fax: +49 6428 4465-231  
 D-35260 Stadtallendorf      E-Mail: contact@faudi-aviation.com  
 Germany      Web: www.faudi-aviation.com

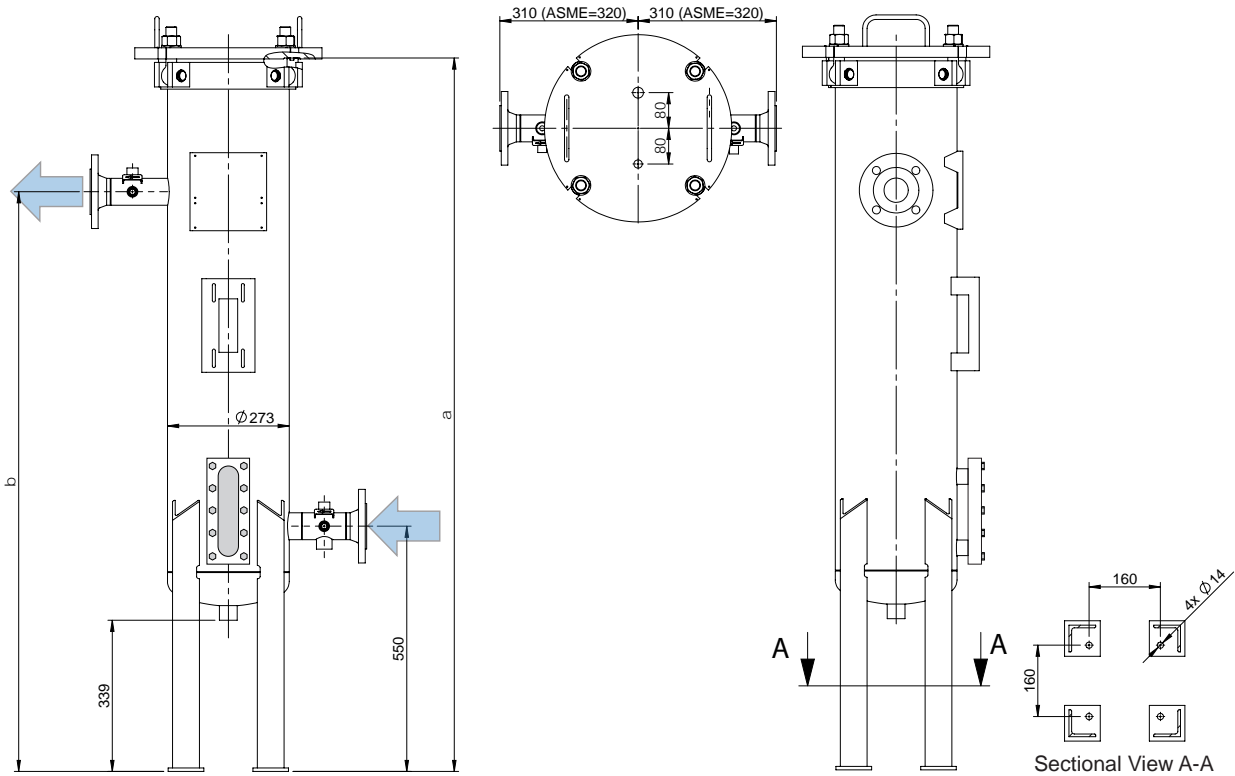


## FW9-S Series

### Standard Design


- Made in stainless steel
- AD-2000 module H / ASME code without U-Stamp
- Design pressure: 12 bar
- Connections for:
  - Automatic air eliminator
  - Pressure relief valve
  - Water Level Indicator
  - Differential pressure measuring device (2-point)
  - Sample probe connections on inlet and outlet

### Dimensions in mm for stainless steel vessel standard



Type	In-/Outlet		Dimensions in mm*		
	DIN	ANSI	Ø	a	b
FW9-S-1/362	DN 50	2"	273	1,120	900
FW9-S-1/467	DN 50	2"	273	1,225	1,000
FW9-S-1/565	DN 50	2"	273	1,325	1,100
FW9-S-1/727	DN 50	2"	273	1,485	1,200
FW9-S-1/842	DN 50	2"	273	1,600	1,300

\* Design in Stainless Steel acc. to AD-2000 or ASME code

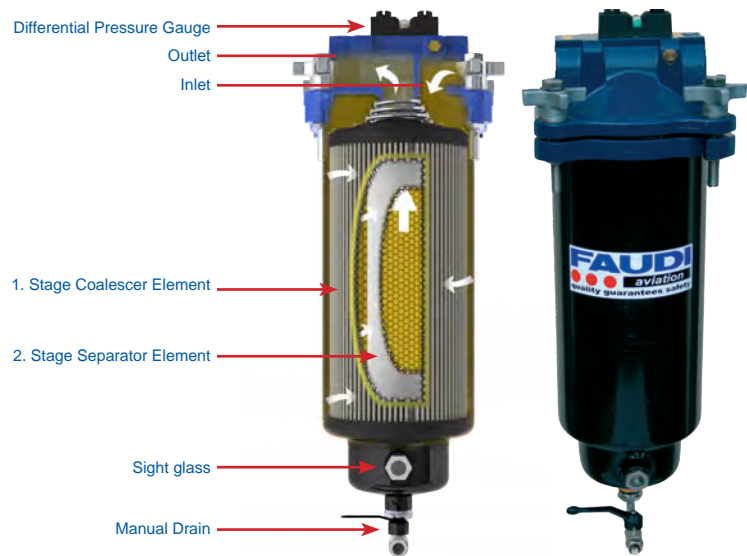
FAUDI Aviation GmbH Scharnhorststrasse 7 B D-35260 Stadtallendorf Germany	Phone: +49 6428 4465-275 Fax: +49 6428 4465-231 E-Mail: <a href="mailto:contact@faudi-aviation.com">contact@faudi-aviation.com</a> Web: <a href="http://www.faudi-aviation.com">www.faudi-aviation.com</a>	
--	---	---

# VFC Series

## Description

Approved and tested according to EI 1581 5<sup>th</sup> edition, Category C , Type S & S-LW and Category M, Type S.

The verticale filter water separator Type VFC-1 fascinates by high economic efficiency as well as an easy installation and servicing.



## Applications

- Airfield refuelling cars
- Helicopter refuelling
- stationary and mobile fuelling units on small airfields/airports
- Refuelling of small aircrafts
- Filtration of diesel on low flow rates
- Filtration of heating oil
- Refuelling of small ships and barks

## Fuels

- Kerosine (Jet Fuel)
- Military Jet Fuels
- AVGAS
- Diesel (other type of element)

## Technical Details

VFC-1/254-10	Micron rating (µm)	max. Flow Rate (l/min)				max. Differential Pressure (bar)
		Kerosine		JP4, JP5, JP8	Diesel	
		Cat. C, Type S	Cat. C, Type S-LW	Cat. M, Type S		
CS6-254-1	1	71	89	-	29	1.1
MCS6-254-1	1	-	-	52		1.1

VFC-1/355-10	Micron rating (µm)	max. Flow Rate (l/min)				max. Differential Pressure (bar)
		Kerosine		JP4, JP5, JP8	Diesel	
		Cat. C, Type S	Cat. C, Type S-LW	Cat. M, Type S		
CS6-355-1	1	110	136	-	45	1.1
MCS6-355-1	1	-	-	74		1.1

- Design Pressure: 10 bar
- Design Temperature: -10°C to +50°C

## Maintenance & Inspection

- Vessel cover with Quick Opening for easiest Maintenance

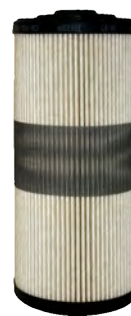
FAUDI Aviation GmbH Phone: +49 6428 4465-275  
 Scharnhorststrasse 7 B Fax: +49 6428 4465-231  
 D-35260 Stadtallendorf E-Mail: contact@faudi-aviation.com  
 Germany Web: www.faudi-aviation.com



## VFC Series

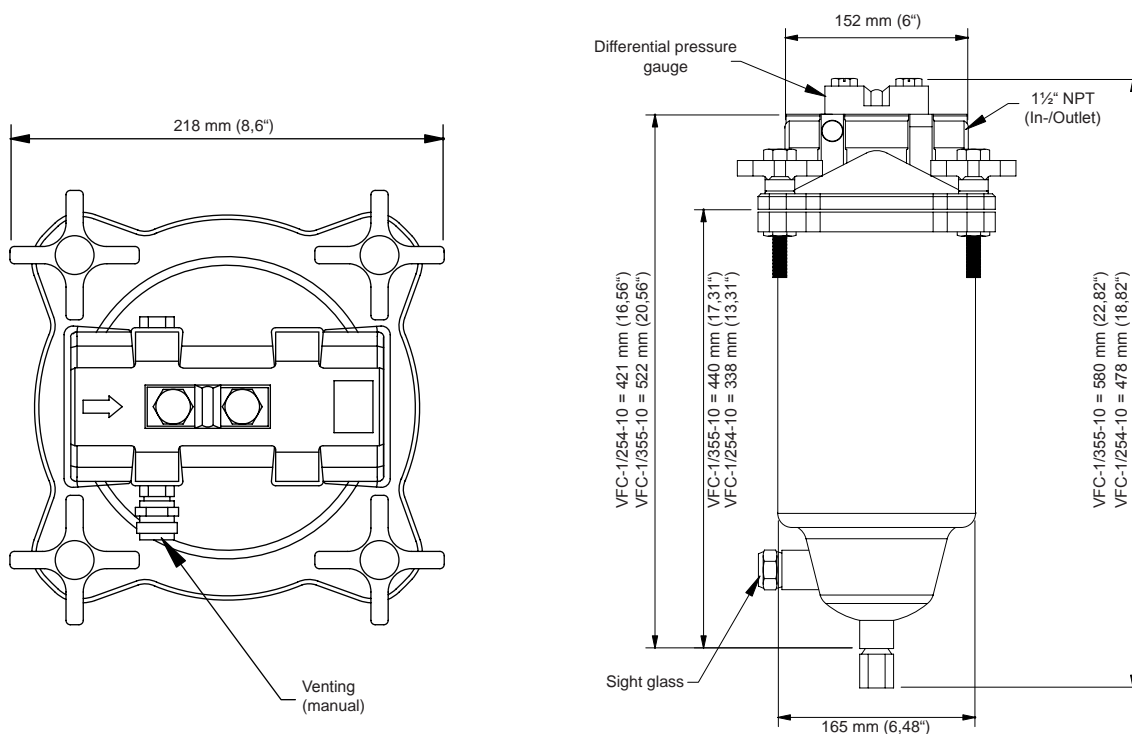
### Standard Design

- Head of vessel made from die-cast aluminium
- Vessel made from carbon steel (painted)
- Design pressure 10 bar on +50°C
- Vessel cover with quick opening
- In-/Outlet 1 ½" NPT
- Manual water drain
- Sight glass
- Manual venting
- Differential Pressure Gauge
- Inclusive 1 ea CS6-254-1 or CS6-355-1



Coalescer/Separator-Element

### Dimensions



Spare Parts	Quantity	Article No.
VFC-1/254-10	1	3 002 528
VFC-1/355-10	1	3 002 530
Differential pressure gauge	1	3 002 531
O-Ring for differential pressure gauge 20,5 x 3 (Viton®)	2	3 003 830
O-Ring for differential pressure gauge 9,52 x 1,78 (Viton®)	2	3 003 831
Seal 158x5,3 (BUNA-N) or	1	3 005 251
Seal 158x5,3 (VITON®)	1	3 005 252
Coalescer-/Separator Type CS6-254-1		3 003 983
Coalescer-/Separator Type CS6-355-1		3 003 984
Coalescer-/Separator Type MCS6-254-1		3 004 519
Coalescer-/Separator Type MCS6-355-1		3 004 507

FAUDI Aviation GmbH Phone: +49 6428 4465-275  
 Scharnhorststrasse 7 B Fax: +49 6428 4465-231  
 D-35260 Stadtallendorf E-Mail: contact@faudi-aviation.com  
 Germany Web: www.faudi-aviation.com

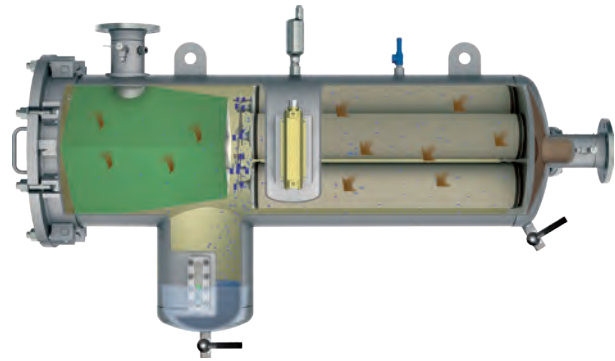


# FW6-T Series

## Applications

For mobile installations on refuellers as well as dispensers according to EI 1581 5<sup>th</sup> Edition, Category C, Type S and Type S-LW.

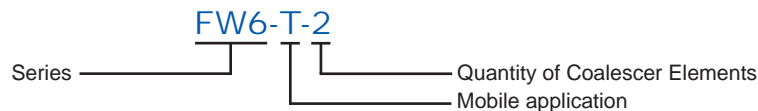
FAUDI Aviation Filter Water Separator Vessels are designed and built in accordance with the strict engineering guidelines and pressure vessel regulation of AD-2000. The design according to other pressure vessel regulations like ASME code with or without u-stamp, BS, GOST-R, etc., is possible on customer request.



## Technical Details

- For mobile applications
- Suitable for Jet A1, Jet A, other fluids on request
- Vessel material acc. to customer request (carbon steel, stainless steel or aluminium)
- Maximal flow rates up to 4,500 l/min resp. 3,240 l/min
- Max. 15 ppm free water in the outlet stream
- Max. 0,26 mg/l (average) particles in the outlet stream

## Sample Identification



Type	Coalescer Element		Separator Element		Maximale Flow Rate			
	Model	Qty	Model	Qty.	Jet-A, Jet-A1 Type S		Jet-A, Jet-A1 Type S-LW	
					l/min	USGPM	l/min	USGPM
FW6-T-2	P.3-842	2	3006212	1	720	190	1.000	264
FW6-T-3	P.3-842	3	3006380	1	1,080	285	1,500	396
FW6-T-4	P.3-842	4	3006275	1	1,440	380	2,000	528
FW6-T-5	P.3-842	5	3006336	1	1,800	475	2,500	660
FW6-T-7	P.3-842	7	3006337	1	2,520	665	3,500	924
FW6-T-8	P.3-842	8	3006274	1	2,880	760	4,000	1,056
FW6-T-9	P.3-842	9	3006338	1	3,240	855	4,500	1,188

\* design in carbon- or stainless steel

FAUDI Aviation GmbH Phone: +49 6428 44652 - 75  
 Scharnhorststrasse 7 B Fax: +49 6428 44652 - 31  
 D-35260 Stadtallendorf E-Mail: contact@faudi-aviation.com  
 Germany Web: www.faudi-aviation.com

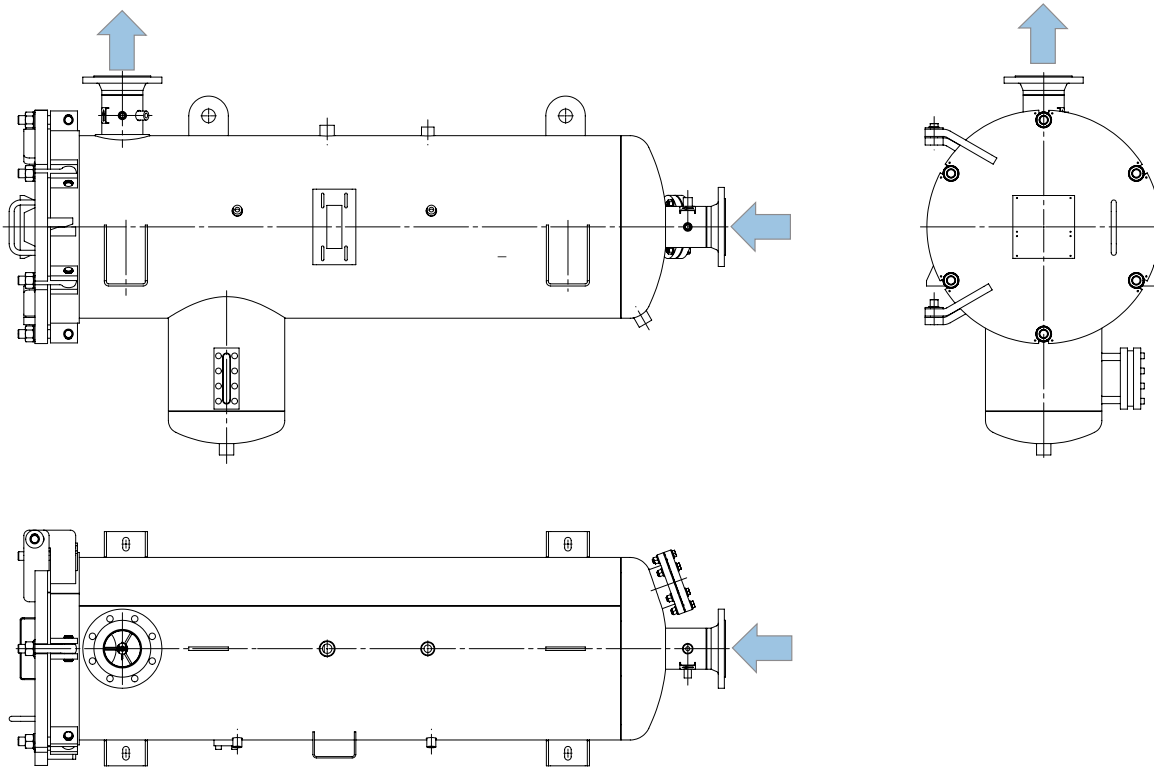



## FW6-T Series

### Standard Design

- Made in carbon or stainless steel
- Cover installation with hinge (left) and swing bolts
- AD-2000 module H
- Design pressure: 16 bar
- Water Level Indicator (Z-3.5)
- Connections for:
  - Automatic air eliminator
  - Pressure relief valve
  - Differential pressure measuring device (4-point)
  - Sample probe connections on outlet and inlet

### Dimensions in mm for carbon steel vessel standard



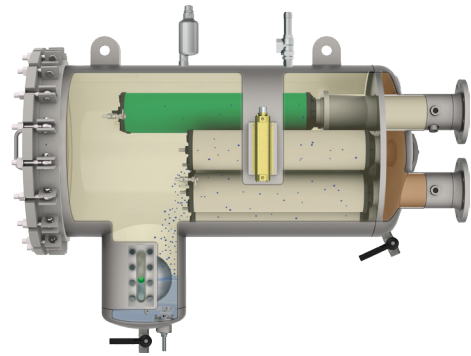
FAUDI Aviation GmbH	Phone:	+49 6428 4465-275	
Scharnhorststrasse 7 B	Fax:	+49 6428 4465-231	
D-35260 Stadtallendorf	E-Mail:	contact@faudi-aviation.com	
Germany	Web:	www.faudi-aviation.com	

# FW10-H-T Series

## Applications

For mobile installations on refuellers as well as hydrant dispensers according to EI 1581 5<sup>th</sup> Edition, Category C, Type S-LW.

FAUDI Aviation Filter Water Separator Vessels are designed and built in accordance with the strict engineering guidelines and pressure vessel regulation of AD-2000. The design according to other pressure vessel regulations like ASME code with or without u-stamp, BS, GOST-R, etc., is possible on customer request.



# FILTER WATER SEPARATOR

## Technical Details

- For mobile applications
- Suitable for Jet A1, Jet A, other fluids on request
- Vessel material acc. to customer request (carbon steel, stainless steel or aluminium)
- Maximal flow rates up to 4,950 l/min
- Max. 15 ppm free water in the outlet stream
- Max. 0,26 mg/l (average) particles in the outlet stream

## Sample Identification



Model No.	Separator Element		max. Flow Rate	
	Model	Qty.	l/min	USGPM
FW10-H-T- 2/ 559	60.444- 565	1	518	136
FW10-H-T- 3/ 559	60.444- 600	1	777	205
FW10-H-T- 3/ 842	60.444- 842	1	1,222	323
FW10-H-T- 4/ 842	60.444- 600	2	1.630	431
FW10-H-T- 4/ 965	60.444- 756	2	1,908	504
FW10-H-T- 4/1093	60.444- 900	2	2,225	588

Model No.	Separator Element		max. Flow Rate	
	Model	Qty.	l/min	USGPM
FW10-H-T- 4/1422	60.644- 900	2	2,812	759
FW10-H-T- 7/ 727	60.644- 600	2	2,372	627
FW10-H-T- 7/ 842	60.644- 900	2	2,852	753
FW10-H-T- 7/ 965	60.644- 900	2	3,340	882
FW10-H-T- 7/1093	60.644-1012	2	3,598	1,029
FW10-H-T- 7/1422	60.644-1210	2	4,950	1,308

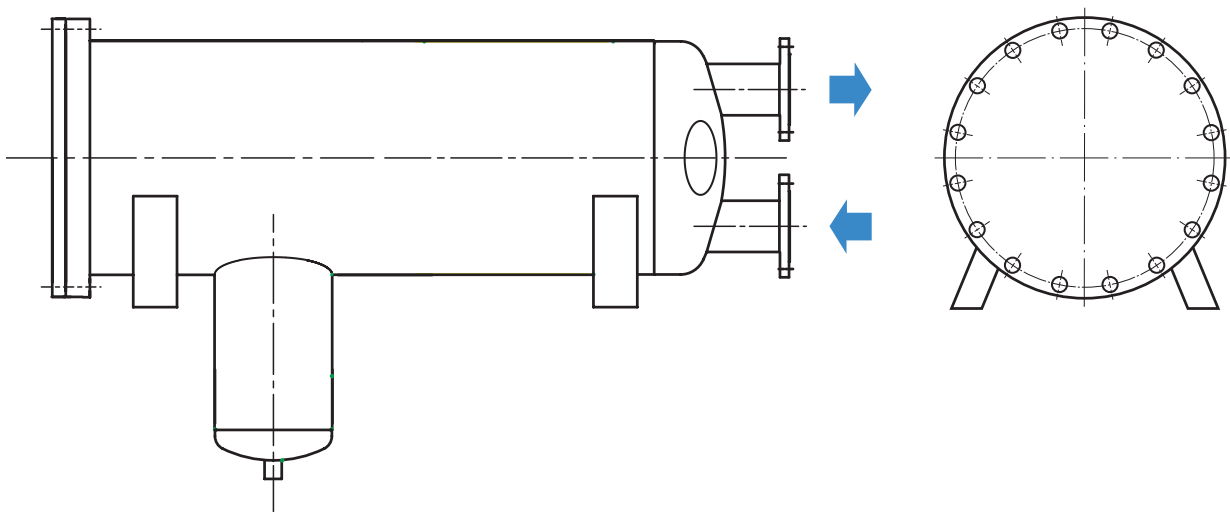
FAUDI Aviation GmbH Phone: +49 6428 4465-275  
 Scharnhorststrasse 7 B Fax: +49 6428 4465-231  
 D-35260 Stadtallendorf E-Mail: contact@faudi-aviation.com  
 Germany Web: www.faudi-aviation.com



## FW10-H-T Series

### Standard Design

- Made in carbon steel
- Cover installation with hinge (left) and swing bolts
- Design in AD-2000 module H
- Design pressure: 16 bar
- Water Level Indicator (Z-3.5)
- Connections for:
  - Automatic air eliminator
  - Pressure relief valve
  - Differential pressure measuring device (4-point)
  - Sample probe connections on outlet and inlet



\* design in carbon steel

FAUDI Aviation GmbH	Phone:	+49 6428 4465-275
Scharnhorststrasse 7 B	Fax:	+49 6428 4465-231
D-35260 Stadtallendorf	E-Mail:	contact@faudi-aviation.com
Germany	Web:	www.faudi-aviation.com





# FW24-H-T Series

## Applications

For mobile installations on hydrant dispensers and other refueling vehicles.

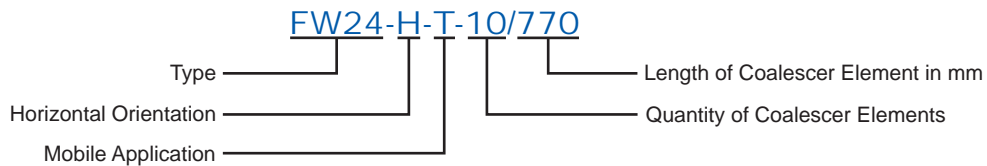
FAUDI Aviation Filter Water Separator Vessels are designed and built in accordance with the strict engineering guidelines and pressure vessel regulation of AD-2000. The design according to other pressure vessel regulations like ASME code with or without u-stamp, BS, GOST-R, etc., is possible on customer request.



## Technical Details

- For mobile applications
- Suitable for Jet A, Jet A1 and Kerosine, other fluids on request
- Vessel material in aluminium, stainless steel or carbon steel
- Maximal flow rates up to 1,215 usgpm (4,600 l/min)
- Max. 15 ppm free water in the outlet stream
- Max. 0,26 mg/l (average) particles in the outlet stream

## Sample Identification



Type	Coalescer Element		Separator Element		max. Flow Rate		Volume (approx.)	Weight (approx.)*
	Model	Qty.	Model	Qty.	l/min	usgpm	l	kg
FW24-H-T-10-770	P2.1-770-6	10	60.444-754-D	2	1,150	303	95	50
FW24-H-T-16-770	P2.1-770-6	16	60.444-754-D	2	1,840	486	165	72
FW24-H-T-20-770	P2.1-770-6	20	66.444-754-D	4	2,300	607	200	99
FW24-H-T-30-770	P2.1-770-6	30	60.444-754-D	6	3,450	911	240	110
FW24-H-T-36-770	P2.1-770-6	36	60.444-754-D	7	4,140	1,093	280	125
FW24-H-T-40-770	P2.1-770-6	40	60.444-754-D	8	4,600	1,215	341	135

\* material in aluminium

## Features

- ▶ Length as same as 2" filter monitor vessel
- ▶ Standardized elements
- ▶ Standardized flow rates
- ▶ Interchangeable through similarity EI 1582
- ▶ Smallest available flow rate volume-ratio

## Benefits

- ▶ Possible Replacement of 2" filter monitor vessel
- ▶ Elements will not be mistaken for 2" filter monitors
- ▶ Standards like 2" filter monitors
- ▶ Useable with EI 1581 6th edition
- ▶ Lowest weight and volume with a FWS in that flow rate

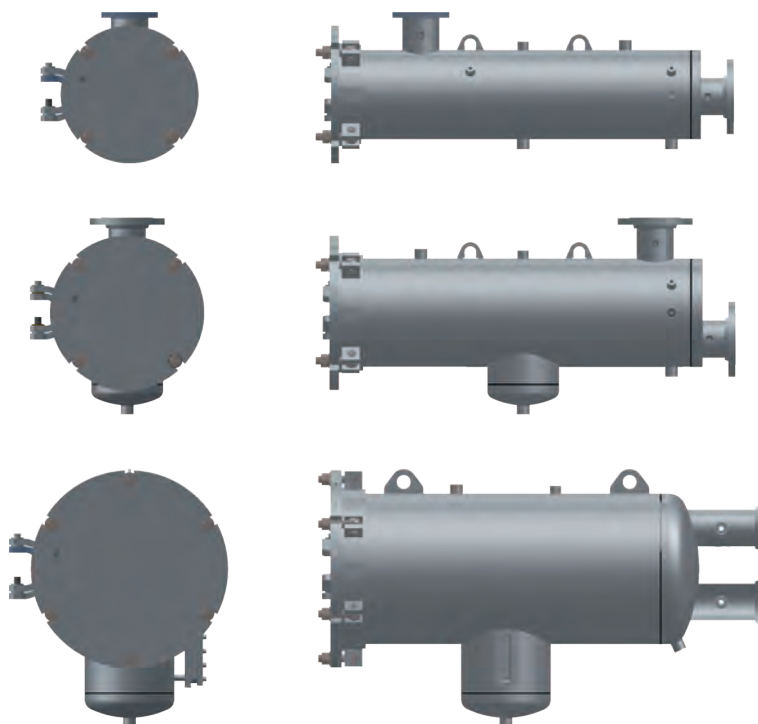
FAUDI Aviation GmbH Phone: +49 6428 4465-275  
 Scharnhorststrasse 7 B Fax: +49 6428 4465-231  
 D-35260 Stadtallendorf E-Mail: contact@faudi-aviation.com  
 Germany Web: www.faudi-aviation.com



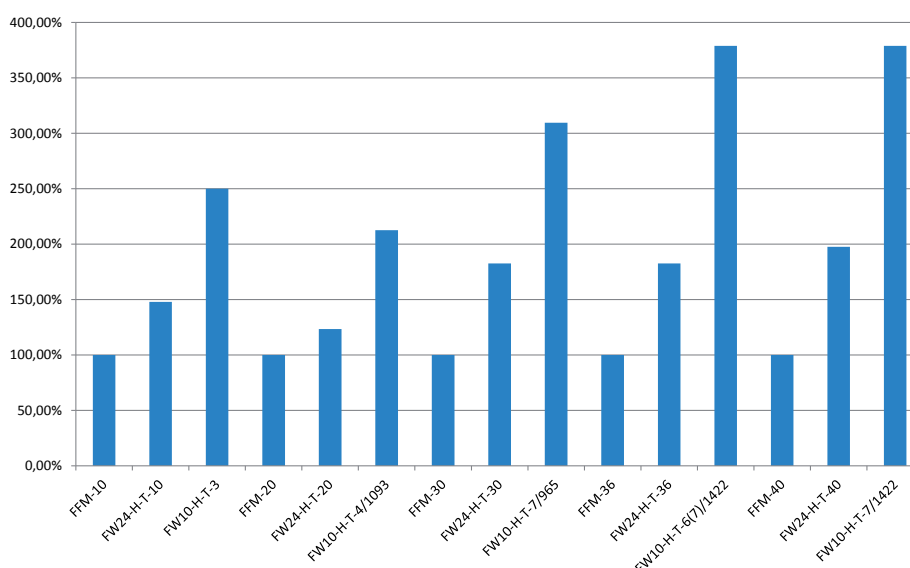


# Comparison (FW24-H-T-, FFM- & FW10-H-T-Series)

## Applications



FW24-H-T-Series				FFM-Series				FW10-H-T-Series			
Model	Flow Rate (l/min)	Volume (l)	Total Weight (-kg)	Model	Flow Rate (l/min)	Volume (l)	Total Weight (-kg)	Model	Flow Rate (l/min)	Volume (l)	Total Weight (-kg)
FW24-H-T-10-770	1,150	95	122	FFM-10	1,150	60	82	FW10-H-T-3-842	1,222	160	205
FW24-H-T-20-770	2,300	200	249	FFM-20	2,300	85	202	FW10-H-T-4-1093	2,225	410	429
FW24-H-T-30-770	3,450	240	291	FFM-30	3,450	135	160	FW10-H-T-7-965	3,340	450	494
FW24-H-T-36-770	4,140	240	291	FFM-36	4,140	135	160	FW10-H-T-6(7)-1422	4,242	610	604
FW24-H-T-40-770	4,600	240	315	FFM-40	4,600	135	160	FW10-H-T-7-1422	4,950	610	604



Total weights (%) in comparison to filter monitor vessels

FAUDI Aviation GmbH  
Scharnhorststrasse 7 B  
D-35260 Stadtallendorf  
Germany

Phone: +49 6428 4465-275  
Fax: +49 6428 4465-231  
E-Mail: [contact@faudi-aviation.com](mailto:contact@faudi-aviation.com)  
Web: [www.faudi-aviation.com](http://www.faudi-aviation.com)



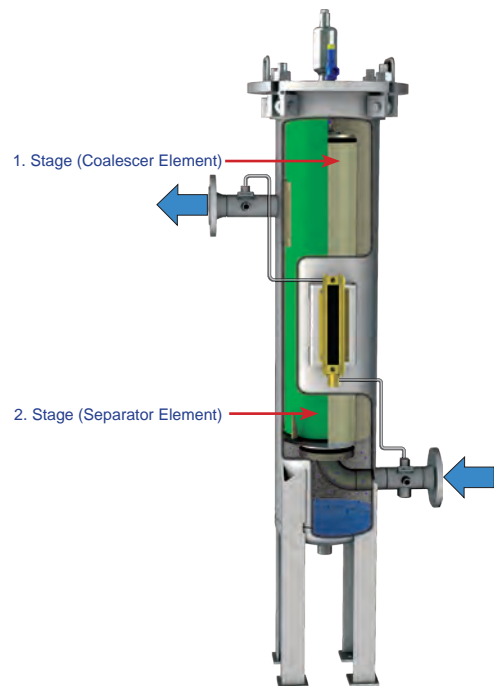


# FW9-S Series

## Applications

For stationary and mobile installations at refineries, fuel storages, marine depots, as well as tank farms, according to EI 1581 5<sup>th</sup> Edition, Category C, Type S

FAUDI Aviation Filter Water Separator Vessels are designed and built in accordance with the strict engineering guidelines DGRL 97/23/EG and pressure vessel regulation of AD-2000. The design according to other pressure vessel regulations like ASME code with or without U-Stamp, BS, GOST-R, etc., is possible on customers request.



# FILTER WATER SEPARATOR

## Technical Details

- For mobile and stationary applications
- Tested and approved acc. to EI 1581 5th edition, Cat. C, Type S
- Suitable for Jet A1, Avgas and other fluids on request
- Maximal flow rates up to 330 l/min
- Max. 15 ppm free water in the outlet
- Max. 0,26 mg/l (average) particles in the outlet

## Sample Identification

FW9-S-1/727

Series \_\_\_\_\_ Length of Coalescer Element in mm

Type	Coalescer Element		Separator Element		Maximum Flow Rate		Volume ≈ l	Weight ≈ kg <sup>1</sup>
	Model	Qty.	Model	Qty.	Jet-A, Jet-A1 Cat. C, Type S	l/min		
FW9-S-1/362	P.3-362	1	FW9-S-1(362)	1	134	35	40	95
FW9-S-1/467	P.3-467	1	FW9-S-1(467)	1	177	46	45	95
FW9-S-1/565	P.3-559	1	FW9-S-1(565)	1	217	57	50	100
FW9-S-1/727	P.3-727	1	FW9-S-1(727)	1	283	74	60	100
FW9-S-1/842	P.3-842	1	FW9-S-1(842)	1	330	87	65	110

<sup>1</sup>Design in Stainless Steel acc. to AD-2000 or ASME code

FAUDI Aviation GmbH      Phone: +49 6428 4465-275  
 Scharnhorststrasse 7 B      Fax: +49 6428 4465-231  
 D-35260 Stadtallendorf      E-Mail: contact@faudi-aviation.com  
 Germany      Web: www.faudi-aviation.com

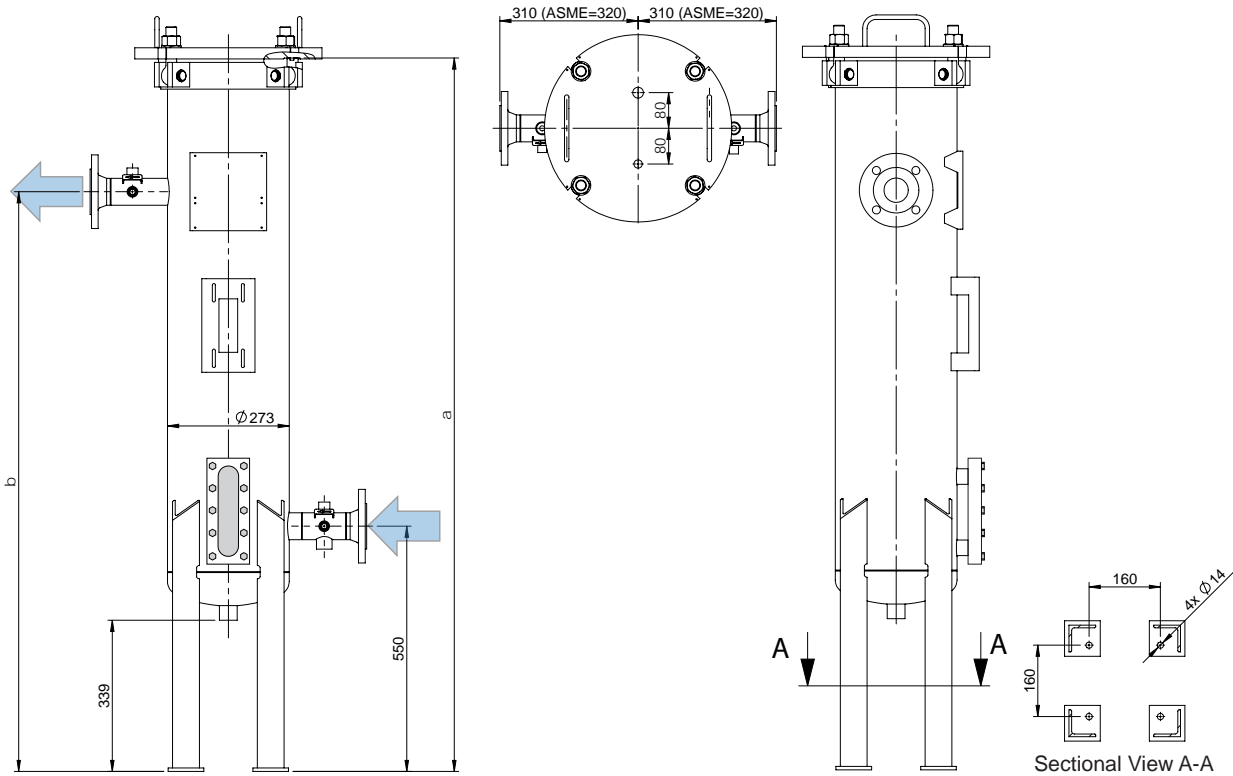


## FW9-S Series

### Standard Design

- Made in stainless steel
- AD-2000 module H / ASME code without U-Stamp
- Design pressure: 12 bar
- Connections for:
  - Automatic air eliminator
  - Pressure relief valve
  - Water Level Indicator
  - Differential pressure measuring device (2-point)
  - Sample probe connections on inlet and outlet

### Dimensions in mm for stainless steel vessel standard



Type	In-/Outlet		Dimensions in mm*		
	DIN	ANSI	Ø	a	b
FW9-S-1/362	DN 50	2"	273	1,120	900
FW9-S-1/467	DN 50	2"	273	1,225	1,000
FW9-S-1/565	DN 50	2"	273	1,325	1,100
FW9-S-1/727	DN 50	2"	273	1,485	1,200
FW9-S-1/842	DN 50	2"	273	1,600	1,300

\*Design in Stainless Steel acc. to AD-2000 or ASME code

FAUDI Aviation GmbH Phone: +49 6428 4465-275  
 Scharnhorststrasse 7 B Fax: +49 6428 4465-231  
 D-35260 Stadtallendorf E-Mail: contact@faudi-aviation.com  
 Germany Web: www.faudi-aviation.com

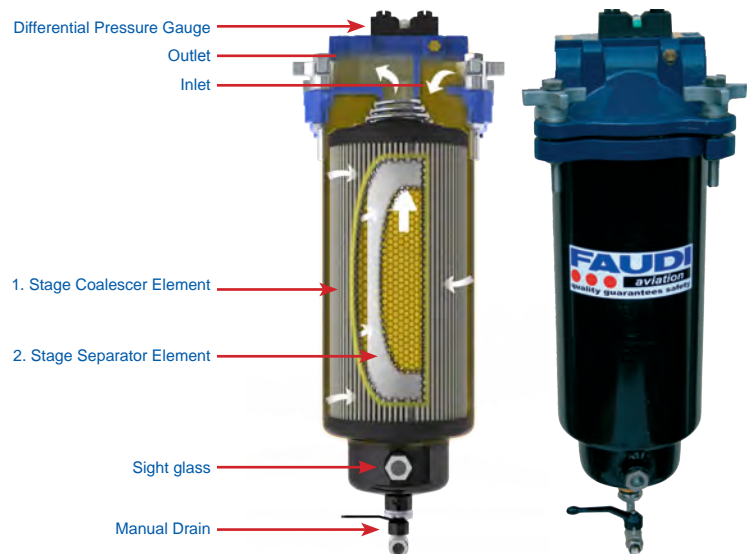


# VFC Series

## Description

Approved and tested according to EI 1581 5<sup>th</sup> edition, Category C , Type S & S-LW and Category M, Type S.

The verticale filter water separator Type VFC-1 fascinates by high economic efficiency as well as an easy installation and servicing.



## Applications

- Airfield refuelling cars
- Helicopter refuelling
- stationary and mobile fuelling units on small airfields/airports
- Refuelling of small aircrafts
- Filtration of diesel on low flow rates
- Filtration of heating oil
- Refuelling of small ships and barks

## Fuels

- Kerosine (Jet Fuel)
- Military Jet Fuels
- AVGAS
- Diesel (other type of element)

## Technical Details

VFC-1/254-10	Micron rating (µm)	max. Flow Rate (l/min)				max. Differential Pressure (bar)
		Kerosine		JP4, JP5, JP8	Diesel	
		Cat. C, Type S	Cat. C, Type S-LW	Cat. M, Type S		
Coalescer-/Separator Type						
CS6-254-1	1	71	89	-	29	1.1
MCS6-254-1	1	-	-	52		1.1

VFC-1/355-10	Micron rating (µm)	max. Flow Rate (l/min)				max. Differential Pressure (bar)
		Kerosine		JP4, JP5, JP8	Diesel	
		Cat. C, Type S	Cat. C, Type S-LW	Cat. M, Type S		
Coalescer-/Separator Type						
CS6-355-1	1	110	136	-	45	1.1
MCS6-355-1	1	-	-	74		1.1

- Design Pressure: 10 bar
- Design Temperature: -10°C to +50°C

## Maintenance & Inspection

- Vessel cover with Quick Opening for easiest Maintenance

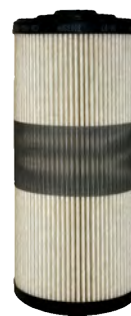
FAUDI Aviation GmbH Phone: +49 6428 4465-275  
 Scharnhorststrasse 7 B Fax: +49 6428 4465-231  
 D-35260 Stadtallendorf E-Mail: contact@faudi-aviation.com  
 Germany Web: www.faudi-aviation.com



## VFC Series

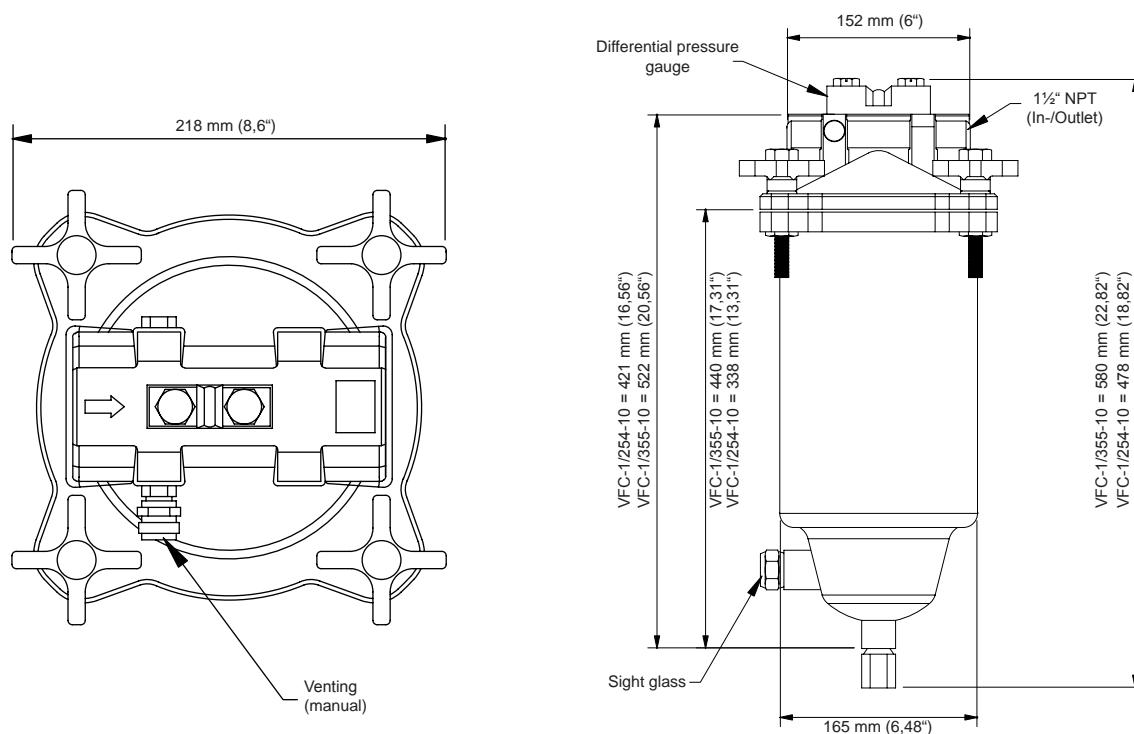
### Standard Design

- Head of vessel made from die-cast aluminium
- Vessel made from carbon steel (painted)
- Design pressure 10 bar on +50°C
- Vessel cover with quick opening
- In-/Outlet 1 ½" NPT
- Manual water drain
- Sight glass
- Manual venting
- Differential Pressure Gauge
- Inclusive 1 ea CS6-254-1 or CS6-355-1



Coalescer/Separator-Element

### Dimensions



Spare Parts	Quantity	Article No.
VFC-1/254-10	1	3 002 528
VFC-1/355-10	1	3 002 530
Differential pressure gauge	1	3 002 531
O-Ring for differential pressure gauge 20,5 x 3 (Viton®)	2	3 003 830
O-Ring for differential pressure gauge 9,52 x 1,78 (Viton®)	2	3 003 831
Seal 158x5,3 (BUNA-N) or	1	3 005 251
Seal 158x5,3 (VITON®)	1	3 005 252
Coalescer-/Separator Type CS6-254-1		3 003 983
Coalescer-/Separator Type CS6-355-1		3 003 984
Coalescer-/Separator Type MCS6-254-1		3 004 519
Coalescer-/Separator Type MCS6-355-1		3 004 507

FAUDI Aviation GmbH Phone: +49 6428 4465-275  
 Scharnhorststrasse 7 B Fax: +49 6428 4465-231  
 D-35260 Stadtallendorf E-Mail: contact@faudi-aviation.com  
 Germany Web: www.faudi-aviation.com



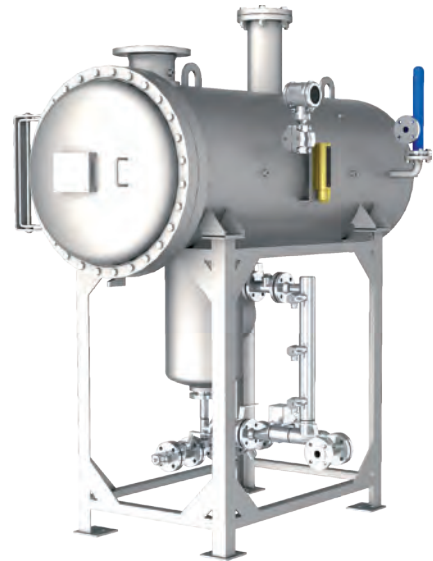


# FWE Series

## Applications

For stationary installations at refineries, fuel storages, marine depots, as well as tank farms, according EI 1581 5<sup>th</sup> Edition Cat. M.

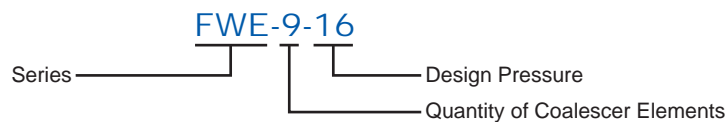
FAUDI Aviation Filter Water Separator Vessels are designed and built in accordance with the strict engineering guidelines and pressure vessel regulation of AD-2000.



## Technical Details

- For stationary applications
- Suitable for JP-4 and JP-8
- Vessel material acc. to customer request (carbon steel, stainless steel or aluminium)
- Maximal flow rates up to 5,000 l/min
- Max. 15 ppm free water in the outlet stream
- Max. 0.26 mg/l (average) particles in the outlet stream

## Sample Identification



Series	Coalescer Element		Separator Element		Maximale Flow Rate		Connections	
	Model	Qty.	Model	Qty.	l/min	USGPM	DIN	ANSI
FWE- 3	Y.1-842/5	3	on request	1	750	198	DN 80	3"
FWE- 4	Y.1-842/5	4		1	1,000	264	DN 100	4"
FWE- 5	Y.1-842/5	5		1	1,250	330	DN 100	4"
FWE- 7	Y.1-842/5	7		1	1,750	462	DN 100	5"
FWE- 9	Y.1-842/5	9		1	2,250	594	DN 150	5"
FWE-11	Y.1-842/5	11		1	2,750	726	DN 150	6"
FWE-13	Y.1-842/5	13		1	3,250	858	DN 150	6"
FWE-17	Y.1-842/5	17		1	4,250	1,122	DN 200	8"
FWE-20	Y.1-842/5	20		1	5,000	1,320	DN 200	8"

\* design in carbon steel

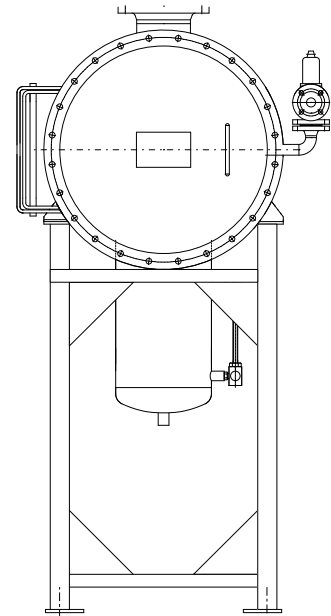
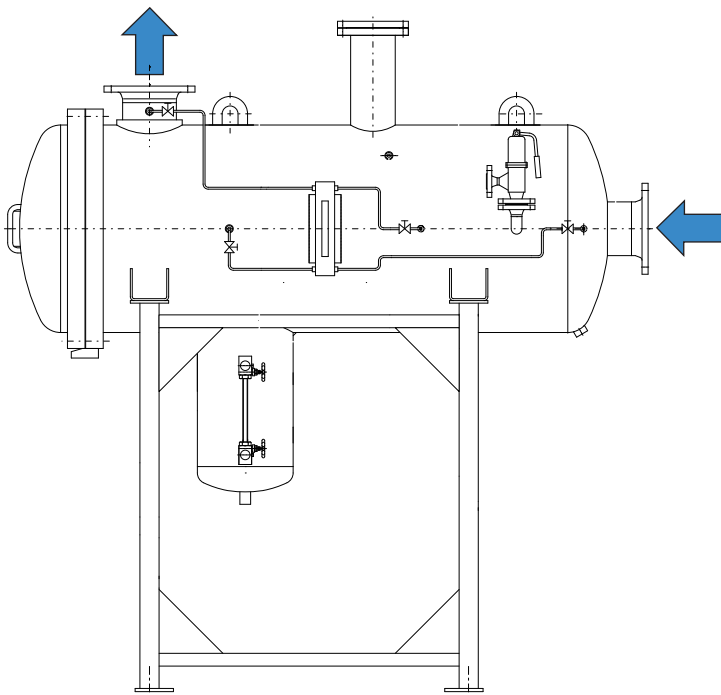
FAUDI Aviation GmbH Phone: +49 6428 4465-275  
 Scharnhorststrasse 7 B Fax: +49 6428 4465-231  
 D-35260 Stadtallendorf E-Mail: contact@faudi-aviation.com  
 Germany Web: www.faudi-aviation.com



## FWE Series

### Standard Design

- Made in carbon steel
- Cover installation with hinge (left) and swing bolts
- Design acc. to AD-2000 module H
- Design pressure: 16 bar
- Water Level Indicator (Z-3.5)
- Connections for:
  - Automatic air eliminator
  - Pressure relief valve
  - Differential pressure measuring device (4-point)
  - Sample probe connections on outlet and inlet



FAUDI Aviation GmbH	Phone:	+49 6428 4465-275
Scharnhorststrasse 7 B	Fax:	+49 6428 4465-231
D-35260 Stadtallendorf	E-Mail:	contact@faudi-aviation.com
Germany	Web:	www.faudi-aviation.com

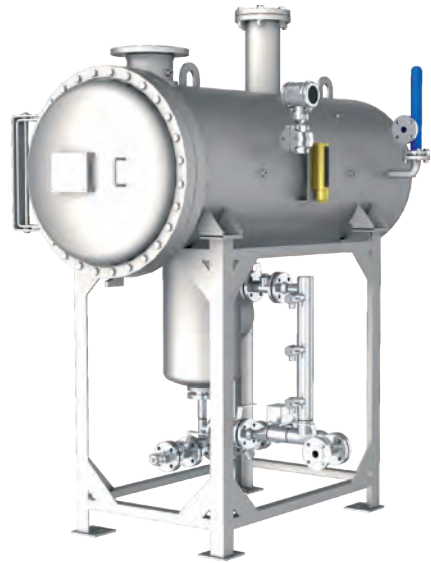


# FWE-STS-M Series

## Applications

For stationary installations at refineries, fuel storages, marine depots, as well as tank farms, according to STS-M 126 and TL 4330-0001.

FAUDI Aviation Filter Water Separator Vessels are designed and built in accordance with the strict engineering guidelines and pressure vessel regulation of AD-2000.



FILTER WATER SEPARATOR

## Technical Details

- For stationary applications
- Suitable for JP-4 and JP-8
- Vessel material acc. to customer request (carbon steel, stainless steel or aluminium)
- Maximal flow rates up to 4.000 l/min
- Max. 5 ppm free water in the outlet stream
- Max. 0,5 mg/l (average) particles in the outlet stream

## Sample Identification



Series	Coalescer Element		Separator Element		Maximale Flow Rate		Volume	Weight
	Model	Qty.	Model	Qty.	l/min	USGPM	l	kg
FWE- 3	D.1-842	3	on request	1	600	158	≈ 224	≈ 444
FWE- 4	D.1-842	4		1	800	211	≈ 285	≈ 492
FWE- 5	D.1-842	5		1	1.000	264	≈ 340	≈ 544
FWE- 7	D.1-842	7		1	1.400	369	≈ 441	≈ 602
FWE- 9	D.1-842	9		1	1.800	475	≈ 638	≈ 697
FWE-11	D.1-842	11		1	2.200	581	≈ 748	≈ 749
FWE-13	D.1-842	13		1	2.600	686	≈ 937	≈ 816
FWE-17	D.1-842	17		1	3.400	898	≈ 1.111	≈ 892
FWE-20	D.1-842	20		1	4.000	1.056	≈ 1.344	≈ 930

<sup>1</sup> design in carbon steel

FAUDI Aviation GmbH Phone: +49 6428 4465-275  
 Scharnhorststrasse 7 B Fax: +49 6428 4465-231  
 D-35260 Stadtallendorf E-Mail: contact@faudi-aviation.com  
 Germany Web: www.faudi-aviation.com

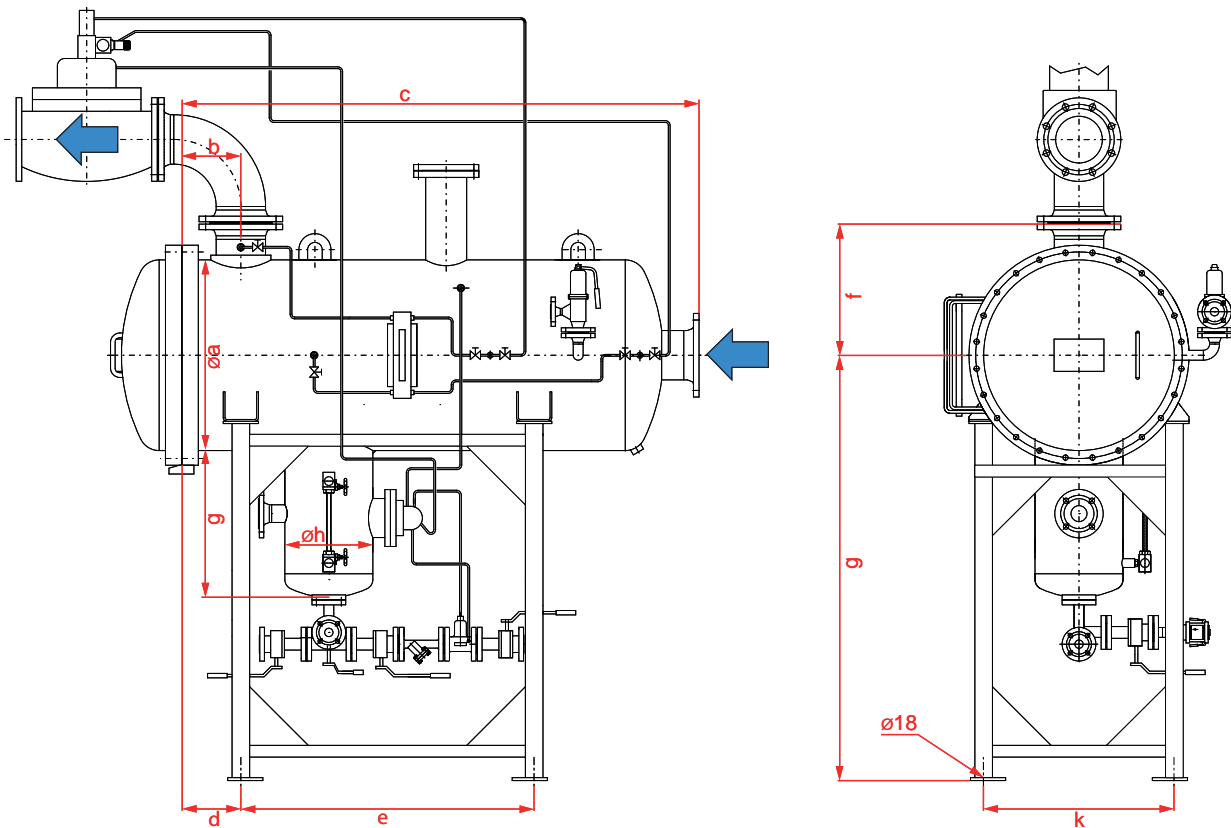


## FWE-ST5-M Series

### Standard Design

- Made in carbon steel, outside prime coated, inside epoxy coated acc. to MIL-C-4556
- Cover installation with hinge (left)
- AD-2000 module H
- Design pressure: 16 bar
- Connections for:
  - Automatic air eliminator
  - Pressure relief valve
  - Differential pressure measuring device (4-point)
  - Sample probe connections on outlet and inlet

### Dimensions in mm for carbon steel vessel standard



Model No.	Connections		Dimensions in mm									
	DIN	ANSI	ø a	b	c	d	e	f	g	øh	k	l
FWE- 3	DN 80	3"	400	225	1.775	250	1.080	355	475	324	250	1.230
FWE- 4	DN 100	4"	450	225	1.797	250	1.080	385	475	324	300	1.230
FWE- 5	DN 100	4"	500	225	1.815	250	1.090	420	475	324	350	1.230
FWE- 7	DN 100	5"	550	247	1.880	250	1.125	440	475	324	400	1.230
FWE- 9	DN 150	5"	650	305	1.995	250	1.230	490	475	324	500	1.295
FWE-11	DN 150	6"	700	300	2.015	250	1.240	530	475	324	550	1.445
FWE-13	DN 150	6"	750	300	2.035	250	1.230	555	475	324	600	1.470
FWE-17	DN 200	8"	850	300	2.055	250	1.230	595	475	324	700	1.495
FWE-20	DN 200	8"	900	375	2.210	250	1.380	620	475	324	750	1.520

FAUDI Aviation GmbH Phone: +49 6428 4465-275  
 Scharnhorststrasse 7 B Fax: +49 6428 4465-231  
 D-35260 Stadtallendorf E-Mail: contact@faudi-aviation.com  
 Germany Web: www.faudi-aviation.com

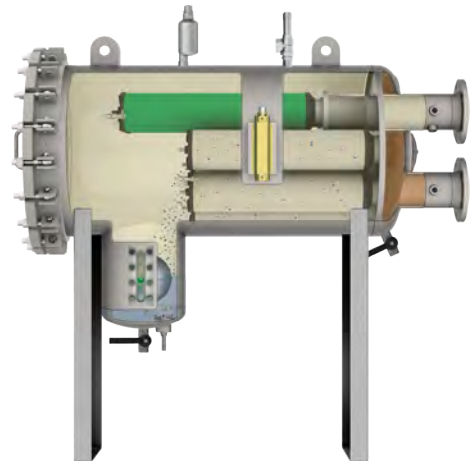


# FW10-HM-Series

## Applications

For military and stationary installations at refineries, fuel storages, marine depots, as well as tank farms, according to EI 1581 5<sup>th</sup> Edition, Category M, Type S

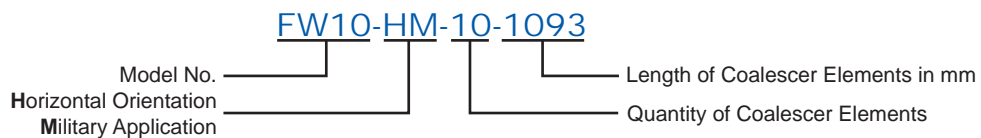
FAUDI Aviation Filter Water Separator Vessels are designed and built in accordance with the strict engineering guidelines and pressure vessel regulation of AD-2000. The design according to other pressure vessel regulations like ASME code with or without u-stamp, BS, GOST-R, etc., is possible on customer request.



## Technical Details

- For stationary applications
- Suitable for JP4, JP5 and JP8, other fluids on request
- Vessel material acc. to customer request (carbon steel, stainless steel or aluminium)
- Maximal flow rates up to 4,000 l/min
- Max. 15 ppm free water in the outlet stream
- Max. 0,26 mg/l (average) particles in the outlet stream

## Sample Identification



Model No.	Coalescer Element		Separator Element		max. Flow Rate	
	Model	Qty.	Model	Qty.	l/min	USGPM
FW10-HM- 2/ 559	MIL.4-559 or MIL.7-559	2	60.644- 565/DM or 60.677- 565/DM	1	360	95
FW10-HM- 3/ 559	MIL.4-559 or MIL.7-559	3	60.644- 565/DM or 60.677- 565/DM	1	560	148
FW10-HM- 3/ 842	MIL.4-842 or MIL.7-842	3	60.644- 842/DM or 60.677- 842/DM	1	850	225
FW10-HM- 3/1093	MIL.4-1093 or MIL.7-1093	3	60.644- 1093/DM or 60.677- 1093/DM	1	1,200	317
FW10-HM- 4/1093	MIL.4-1093 or MIL.7-1093	4	60.644- 842/DM or 60.677- 842/DM	2	1,600	422
FW10-HM- 5/1422	MIL.4-1422 or MIL.7-1422	5	60.644- 1093/DM or 60.677- 1093/DM	2	2,500	660
FW10-HM- 7/1422	MIL.4-1422 or MIL.7-1422	7	60.644- 1093/DM or 60.677- 1093/DM	3	3,400	898
FW10-HM- 8/1422	MIL.4-1422 or MIL.7-1422	8	60.644- 1188/DM or 60.677- 1188/DM	3	4,000	1,056

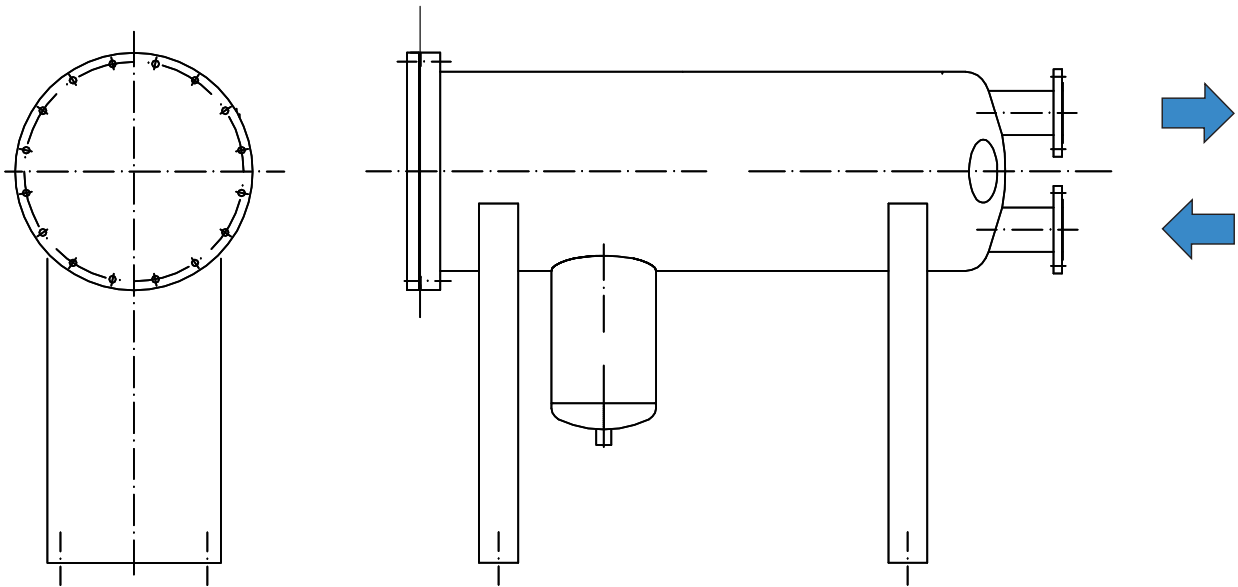
FAUDI Aviation GmbH Phone: +49 6428 4465-275  
 Scharnhorststrasse 7 B Fax: +49 6428 4465-231  
 D-35260 Stadtallendorf E-Mail: contact@faudi-aviation.com  
 Germany Web: www.faudi-aviation.com



## FW10-HM Series

### Standard Design

- Made in carbon steel
- Cover installation with hinge (left) and swing bolts
- Design in AD-2000 module H
- Design pressure: 16 bar
- Water Level Indicator (Z-3.5)
- Connections for:
  - Automatic air eliminator
  - Pressure relief valve
  - Differential pressure measuring device (4-point)
  - Sample probe connections on outlet and inlet



FAUDI Aviation GmbH  
 Scharnhorststrasse 7 B  
 D-35260 Stadtallendorf  
 Germany

Phone: +49 6428 4465-275  
 Fax: +49 6428 4465-231  
 E-Mail: [contact@faudi-aviation.com](mailto:contact@faudi-aviation.com)  
 Web: [www.faudi-aviation.com](http://www.faudi-aviation.com)

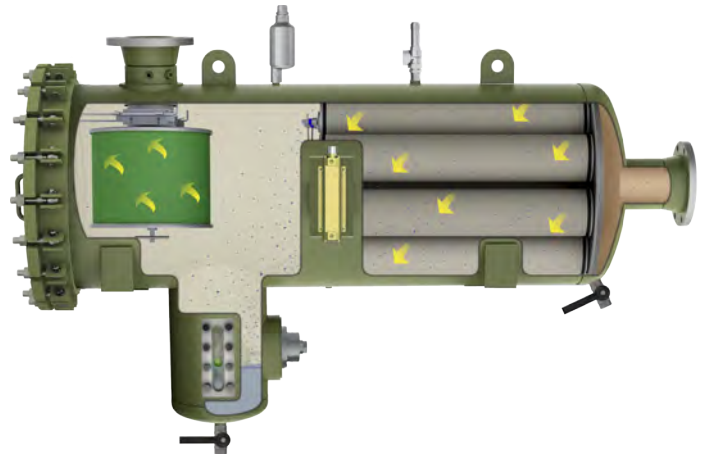
**FAUDI**  
 **aviation**  
 quality guarantees safety

# FWE-T Series

## Applications

For installation at mobile refuelling units according to EI 1581 5<sup>th</sup> Edition Cat. M.

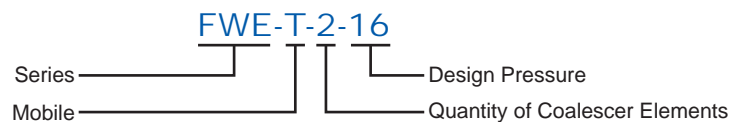
FAUDI Aviation Filter Water Separator Vessels are designed and built in accordance with the strict engineering guidelines and pressure vessel regulation of AD-2000.



## Technical Details

- For mobile applications
- Suitable for JP-4 and JP-8
- Vessel material acc. to customer request (carbon steel, stainless steel or aluminium)
- Maximal flow rates up to 4.000 l/min
- Max. 15 ppm free water in the outlet stream
- Max. 0,25 mg/l (average) particles in the outlet stream

## Sample Identification



Series	Coalescer Element		Separator Element		Maximale Flow Rate		Connections	
	Model	Qty.	Model	Qty.	l/min	USGPM	DIN	ANSI
FWE-T- 3	Y.1-842/5	3	on request	1	750	198	DN 80	3"
FWE-T- 4	Y.1-842/5	4		1	1,000	264	DN 100	4"
FWE-T- 5	Y.1-842/5	5		1	1,250	330	DN 100	4"
FWE-T- 7	Y.1-842/5	7		1	1,750	462	DN 100	5"
FWE-T- 9	Y.1-842/5	9		1	2,250	594	DN 150	5"
FWE-T-11	Y.1-842/5	11		1	2,750	726	DN 150	6"
FWE-T-13	Y.1-842/5	13		1	3,250	858	DN 150	6"
FWE-T-17	Y.1-842/5	17		1	4,250	1,122	DN 200	8"
FWE-T-20	Y.1-842/5	20		1	5,000	1,320	DN 200	8"

\* design in carbon steel

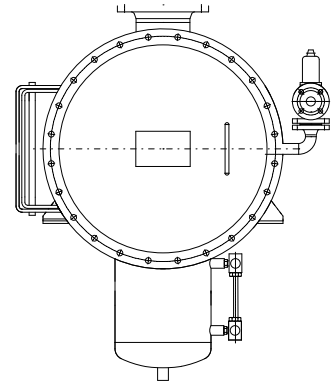
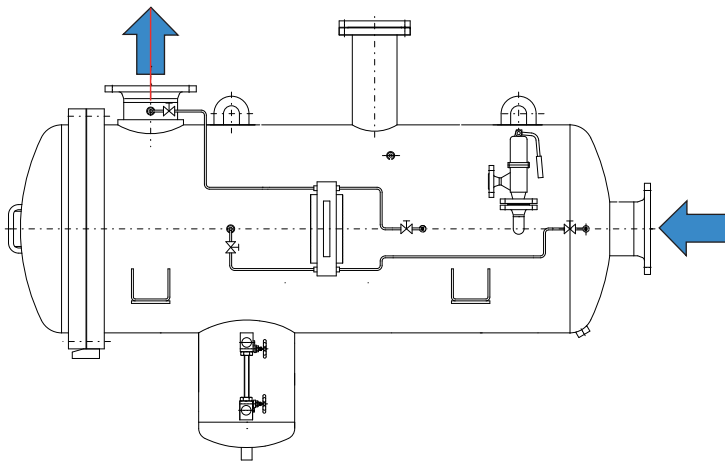
FAUDI Aviation GmbH Phone: +49 6428 4465-275  
 Scharnhorststrasse 7 B Fax: +49 6428 4465-231  
 D-35260 Stadtallendorf E-Mail: contact@faudi-aviation.com  
 Germany Web: www.faudi-aviation.com



## FWE-T Series

### Standard Design

- Made in carbon steel
- Cover installation with hinge (left) and swing bolts
- Design acc. to AD-2000 module H
- Design pressure: 16 bar
- Water Level Indicator (Z-3.5)
- Connections for:
  - Automatic air eliminator
  - Differential pressure measuring device (4-point)
  - Pressure relief valve
  - Sample probe connections on outlet and inlet



FAUDI Aviation GmbH	Phone:	+49 6428 4465-275
Scharnhorststrasse 7 B	Fax:	+49 6428 4465-231
D-35260 Stadtallendorf	E-Mail:	contact@faudi-aviation.com
Germany	Web:	www.faudi-aviation.com



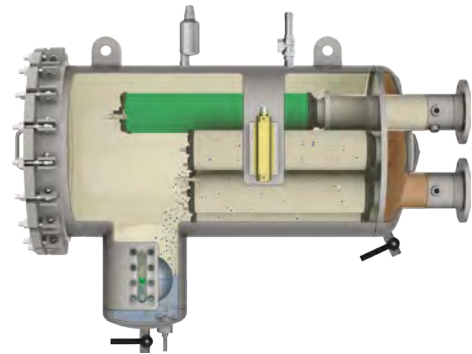


# FW10-HM-T Series

## Applications

For mobile installations on military refuellers according to EI 1581 5<sup>th</sup> Edition, Category M, Type S.

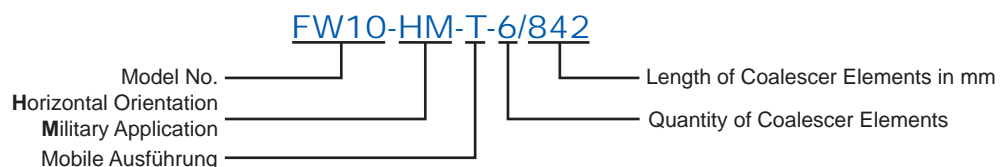
FAUDI Aviation Filter Water Separator Vessels are designed and built in accordance with the strict engineering guidelines and pressure vessel regulation of AD-2000. The design according to other pressure vessel regulations like ASME code with or without u-stamp, BS, GOST-R, etc., is possible on customer request.



## Technical Details

- For mobile applications
- Suitable for JP4, JP5 and JP8, other fluids on request
- Vessel material acc. to customer request (carbon steel, stainless steel or aluminium)
- Maximal flow rates up to 3,150 l/min
- Max. 15 ppm free water in the outlet stream
- Max. 0,26 mg/l (average) particles in the outlet stream

## Sample Identification



Type	Coalescer Element		Separator Element		max. Flow rate	
	Model	Qty.	Model	Qty.	l/min	usgpm
FW10-HM-T-2/559	MIL.4-559 oder MIL.7-559	2	60.644-565/DM oder 60.677-565/DM	1	375	99
FW10-HM-T-3/559	MIL.4-559 oder MIL.7-559	3	60.644-600/DM oder 60.677-600/DM	1	555	146
FW10-HM-T-3/842	MIL.4-842 oder MIL.7-842	3	60.644-842/DM oder 60.677-842/DM	1	780	206
FW10-HM-T-4/842	MIL.4-842 oder MIL.7-842	4	60.644-600/DM oder 60.677-600/DM	2	1.110	293
FW10-HM-T-4/965	MIL.4-965 oder MIL.7-965	4	60.644-756/DM oder 60.677-756/DM	2	1.390	367
FW10-HM-T-4/1093	MIL.4-1093 oder MIL.7-1093	4	60.644-900/DM oder 60.677-900/DM	2	1.600	422
FW10-HM-T-4/1422	MIL.4-1422 oder MIL.7-1422	4	60.644-900/DM oder 60.677-900/DM	2	2.100	554
FW10-HM-T-7/1093	MIL.4-1093 oder MIL.7-1093	7	60.644-1012/DM oder 60.677-1012/DM	2	2.600	686
FW10-HM-T-7/1422	MIL.4-1422 oder MIL.7-1422	7	60.644-1210/DM oder 60.677-1210/DM	2	3.150	832

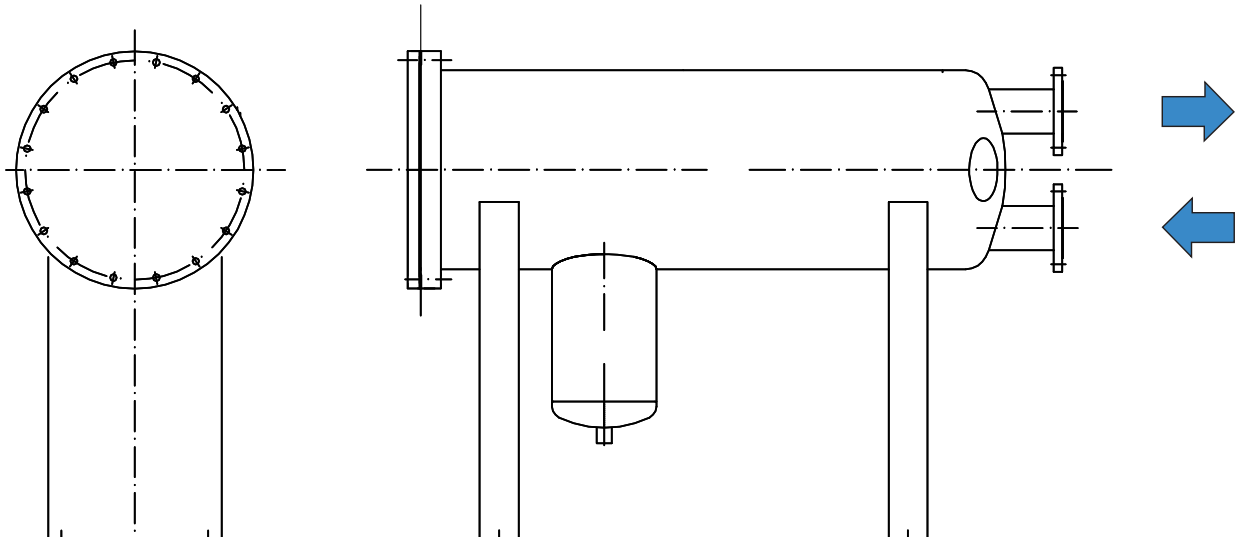
FAUDI Aviation GmbH Phone: +49 6428 4465-275  
 Scharnhorststrasse 7 B Fax: +49 6428 4465-231  
 D-35260 Stadtallendorf E-Mail: contact@faudi-aviation.com  
 Germany Web: www.faudi-aviation.com



## FW10-HM-T Series

### Standard Design

- Made in carbon steel
- Cover installation with hinge (left) and swing bolts
- Design in AD-2000 module H
- Design pressure: 16 bar
- Water Level Indicator (Z-3.5)
- Connections for:
  - Automatic air eliminator
  - Pressure relief valve
  - Differential pressure measuring device (4-point)
  - Sample probe connections on outlet and inlet



Type	Connections		Dimensions										Volume (approx.) l	Weight** (approx.) kg
	DIN	ANSI	Ø a	b1	b2	c	d	e	g	Ø h	k	l		
FW10-H-2-559	100TW	4	*	*	*	*	*	*	*	*	*	*	*	*
FW10-H-3-559	100TW	4	*	*	*	*	*	*	*	*	*	*	*	*
FW10-H-3-842	100TW	4	*	*	*	*	*	*	*	*	*	*	*	*
FW10-H-4-842	100TW	4	559	135	140	1.187	250	550	160	323	600	190	235	330
FW10-H-4-965	100TW	4	559	135	140	1.337	250	550	160	323	600	190	270	340
FW10-H-4-1093	100TW	4	559	135	140	1.487	250	750	160	323	600	190	305	350
FW10-H-4-1422	100TW	4	610	135	140	1.787	250	950	160	323	650	190	410	415
FW10-H-7-1422	150TW	6	711	175	150	1.432	230	700	160	323	800	185	520	400
FW10-H-7/1422	150TW	6	711	175	150	1.660	230	900	160	323	800	185	610	425

\* Dimensions, volume and weight on request  
 \*\* for design in carbon steel

\* design in carbon steel

FAUDI Aviation GmbH  
 Scharnhorststrasse 7 B  
 D-35260 Stadtallendorf  
 Germany

Phone: +49 6428 4465-275  
 Fax: +49 6428 4465-231  
 E-Mail: contact@faudi-aviation.com  
 Web: www.faudi-aviation.com



# Micro Filter



## Application

FAUDI Aviation Micro Filters are used wherever there is a demand for high quality, economic and reliable filtration. They are designed to continuously remove fine particles such as rust, dirt, sand and pipe scale from Aviation Fuel systems. These highly efficient Micro Filters are used at refineries, bulk fuel depots, transfer stations and airports predominantly prior to Filter/Water Separators to protect and prolong Coalescer element life.

FAUDI Aviation Micro Filters are offering the following advantages:

- Safe operation using tried and tested technique
- Easy installation and maintenance
- Quick open/closure (as option)
- Alternative degrees of filtration available by changing element type
- Economic due to increased surface area
- long life time because high solid holding capacity



## Construction

Standard version

Design pressure: 10 bar

Design temperature: -10 to +50°C

Design code: AD 2000 (German Pressure Regulation Rules)

Material of construction: C-Stahl

Internal coating: acc. to MIL-PRF-4556 (latest Edition)

Other design pressures as well as other materials like aluminium or stainless steel are available upon request.

## Further Applications

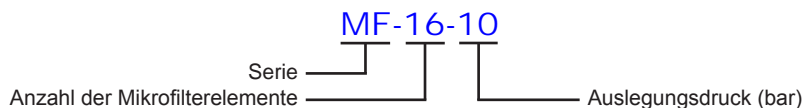
- thin mineral oils, jet propulsion fuels, test and super grade petrol, diesel fuel, solvents, fuel oil
- Natural gas, Refinery gases, Air, Nitrogen
- Lubricants, Hydraulic fluid and turbine oil
- Industrial and cooling water

FAUDI Aviation GmbH	Phone:	+49 6428 4465-275
Scharnhorststrasse 7 B	Fax:	+49 6428 4465-231
D-35260 Stadtallendorf	E-Mail:	contact@faudi-aviation.com
Germany	Web:	www.faudi-aviation.com



# MF Series

## Sample of Identification




## Technical Details

- for stationary and mobile applications
- according to EI 1590 (equipped with 6"-Microfilter Elements)
- for Jet A1, JP 1, JP 4, JP 8, Kerosene and other thin fluids
- maximum flow rates up to 40.000 l/min,  
higher flow rates on request

Fitted with 4" microfilter elements						
Model No.	Microfilter element		Flow rates for liquids to 1,5°C Organized to filter fineness (l/min.)			
	Qty.	Ø	0,5 µm	1 µm	2 µm	5 µm
MF- 1	1	4"	280	320	360	400
MF- 3	3	4"	840	960	1.080	1.200
MF- 7	7	4"	1.969	2.240	2.520	2.800
MF- 10	10	4"	2.800	3.200	3.600	4.000
MF- 16	16	4"	4.480	5.120	5.760	6.400
MF- 20	20	4"	5.600	6.400	7.200	8.000
MF- 28	28	4"	7.840	8.960	10.080	11.200
MF- 35	35	4"	9.800	11.200	12.600	14.000
MF- 41	41	4"	11.480	13.120	14.760	16.400
MF- 50	50	4"	14.000	16.000	18.000	20.000
MF- 61	61	4"	17.080	19.520	21.960	24.400
MF- 80	80	4"	22.400	25.600	28.800	32.000
MF-100	100	4"	28.000	32.000	36.000	40.000

Fitted with 6" microfilter elements						
Model No.	Microfilter element		Flow rates for liquids to 1,5°C Organized to filter fineness (l/min.)			
	Qty.	Ø	0,5 µm	1 µm	2 µm	5 µm
MF- 4/1130	4	6"	1.760	2.240	2.720	3.200
MF- 6/1130	6	6"	2.640	3.360	4.080	4.800
MF- 7/1130	7	6"	3.080	3.920	4.760	5.600
MF- 8/1130	8	6"	3.520	4.480	5.440	6.400
MF- 9/1130	9	6"	3.960	5.040	6.120	7.200
MF-11/1130	11	6"	4.840	6.160	7.480	8.800
MF-12/1130	12	6"	5.280	6.720	8.160	9.600
MF-13/1130	13	6"	5.720	7.280	8.840	10.400
MF-15-1130	15	6"	6.600	8.400	10.200	12.000
MF-20/1130	20	6"	8.800	11.200	13.600	16.000

FAUDI Aviation GmbH Scharnhorststrasse 7 B D-35260 Stadtallendorf Germany	Phone: +49 6428 4465-275 Fax: +49 6428 4465-231 E-Mail: <a href="mailto:contact@faudi-aviation.com">contact@faudi-aviation.com</a> Web: <a href="http://www.faudi-aviation.com">www.faudi-aviation.com</a>	 <p><b>FAUDI</b> aviation quality guarantees safety</p>
--	---	--

# Filter Monitor





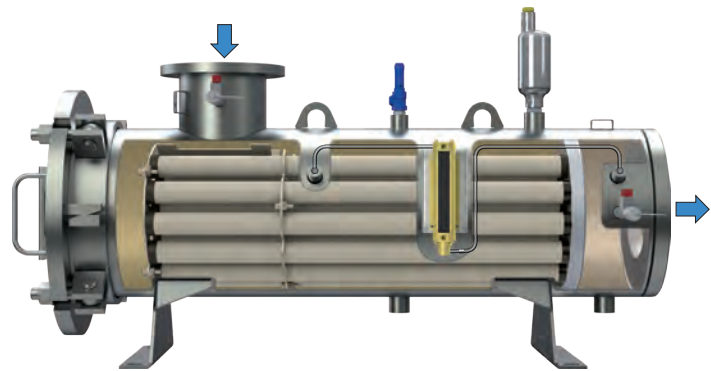
# FFM Series

# FILTER MONITOR

## Applications

FAUDI Aviation Filter Monitors are simple compact units which can easily be installed and serviced. They are developed in particular for mobile fuelling installation and can be delivered in two versions. Type FFM without and type FFMI with Interlock system.

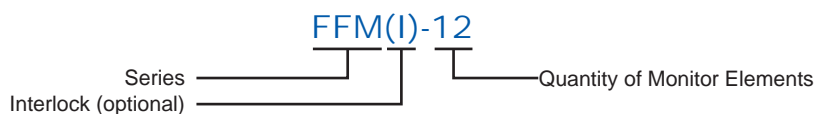
The FAUDI Aviation interlock system is an additional safety device designed to prevent closure of the cover should the full amount of monitor elements not be fitted. The interlock prevents unfiltered fuel being delivered if an element is missing



## Technical Details

- For mobile and/or stationary applications
- According to EI 1583 6<sup>th</sup> Edition
- Suitable for Jet A1, etc
- Vessel material acc. to customer request (carbon steel, stainless steel or aluminium)
- Maximal flow rate up to 4,600 l/min (higher flow rates on request)
- Max. 15 ppm free water in outlet stream
- Max. 0.26 mg/l (average) particles in outlet stream
- Outer diameter of monitor elements: 2 inch
- Nominale micron rating of monitor elements: 1 µm

## Sample Identification



Type	Monitor Element		Element Length		Max. Flow Rate		Volume	Weight* (FFM)	Weight* (FFMI)
	Model	Qty.	mm	inch	l/min	USGPM	≈ l	≈ kg	≈ kg
FFM- 3	M.2-770/6	3	770	30	345	91	≈ 22	≈ 50	n.a.
FFM- 5	M.2-770/6	5	770	30	575	151	≈ 22	≈ 50	n.a.
FFM-10	M.2-770/6	10	770	30	1,150	303	≈ 60	≈ 105	n.a.
FFM-12	M.2-770/6	12	770	30	1,380	364	≈ 60	≈ 120	n.a.
FFM(I)-20	M.2-770/6	20	770	30	2,300	607	≈ 85	≈ 138	≈ 145
FFM(I)-30	M.2-770/6	30	770	30	3,450	911	≈ 135	≈ 190	≈ 200
FFM(I)-36	M.2-770/6	36	770	30	4,140	1,093	≈ 170	≈ 235	≈ 248
FFM(I)-40	M.2-770/6	40	770	30	4,600	1,215	≈ 210	≈ 270	≈ 285

\* Design in carbon or stainless steel

FAUDI Aviation GmbH      Phone:      +49 6428 4465-275  
 Scharnhorststrasse 7 B      Fax:      +49 6428 4465-231  
 D-35260 Stadtallendorf      E-Mail:      contact@faudi-aviation.com  
 Germany      Web:      www.faudi-aviation.com

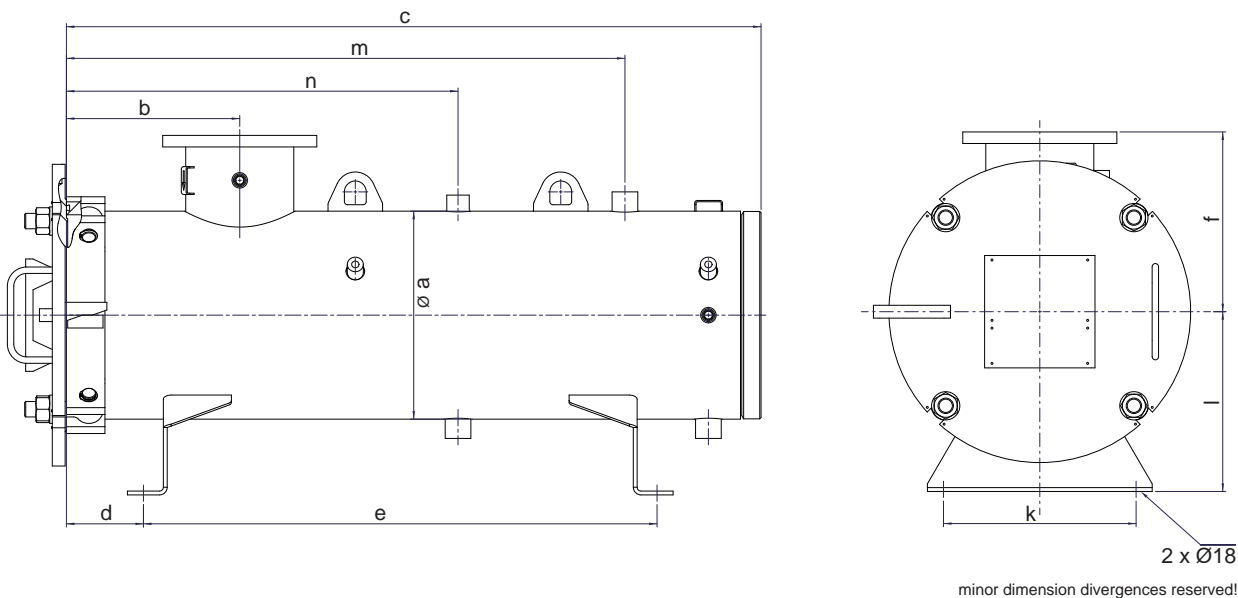


## FFM Series

### Standard Design

- Material in carbon- or stainless steel
- Cover installation with hinge (left) and swing bolts
- AD-2000 module H
- Design pressure: 16 bar
- Connections for:
  - Automatic air eliminator
  - Differential pressure measuring device (2-point)
  - Pressure relief valve
  - Sample probe connections on outlet and inlet

### Dimensions in mm for carbon steel vessel standard



Type	In-/Outlet		Dimensions in mm											
			Ø a	b	FFM	FFM(I)	d	e	f	k	l	FFM	FFM(I)	n
	c	c			m	m								
FFM- 3	DN 50	2"	168	200	1,050	n.a.	290	606	170	150	170	830	n.a.	520
FFM- 5	DN 50	2"	168	200	1,050	n.a.	290	606	170	150	170	830	n.a.	520
FFM-10	DN 100	4"	273	250	1,100	n.a.	100	820	250	250	250	870	n.a.	560
FFM-12	DN 100	4"	273	250	1,100	n.a.	100	820	250	250	250	870	n.a.	560
FFM(I)-20	DN 150	6"	324	270	1,085	1,100	120	800	280	300	280	870	890	610
FFM(I)-30	DN 150	6"	406	270	1,100	1,125	120	800	320	350	350	870	890	610
FFM(I)-36	DN 150	6"	457	270	1,100	1,135	120	800	340	450	400	870	890	610
FFM(I)-40	DN 150	6"	508	270	1,120	1,145	120	800	370	450	400	880	890	610

FAUDI Aviation GmbH Scharnhorststrasse 7 B D-35260 Stadtallendorf Germany	Phone: +49 6428 4465-275 Fax: +49 6428 4465-231 E-Mail: contact@faudi-aviation.com Web: www.faudi-aviation.com	
--	---	--

# VFM Series

# FILTER MONITOR

## Applications

### Approved acc. to EI 1583 6<sup>th</sup> Edition

The FAUDI Aviation VFM-1 (Vertical Filter Monitor) housings for 10" and 14" Monitor elements are simple compact units, which can be easily installed and serviced.

The VFM-1-254-10 assembly can flow 149 l/min. maximum. The VFM-1-355-10 can flow 221 l/min. maximum.

**Installed Monitor elements are approved acc. to EI 1583 6<sup>th</sup> Edition.**



Installed monitor elements are not suitable for using with aviation fuels containing anti-icing additives (FSII)!

## Technical Details

VFM-1-254-10	Micron rating	max. Flow Rates ( ) Kerosene (Jet-A1)		max. change-out differential pressure	
Filter Monitor Element Type		µm	l/min	USGPM	bar
MO6.01C1-254-1/6B	1	149	39	1.5	22

VFM-1-355-10	Micron rating	max. Flow Rates Kerosene (Jet-A1)		max. change-out differential pressure	
Filter Monitor Element Type		µm	l/min	USGPM	bar
MO6.01C1-355-1/6B	1	221	58	1.5	22

- Design pressure: 10 bar
- Design temperature: -10 to +50°C

## Maintenance

- Cover with Quick-Opening for easy maintenance and inspection

## Other possible application

- Jet Fuel Dispensing Systems

FAUDI Aviation GmbH Phone: +49 6428 4465-275  
 Scharnhorststrasse 7 B Fax: +49 6428 4465-231  
 D-35260 Stadtallendorf E-Mail: contact@faudi-aviation.com  
 Germany Web: www.faudi-aviation.com

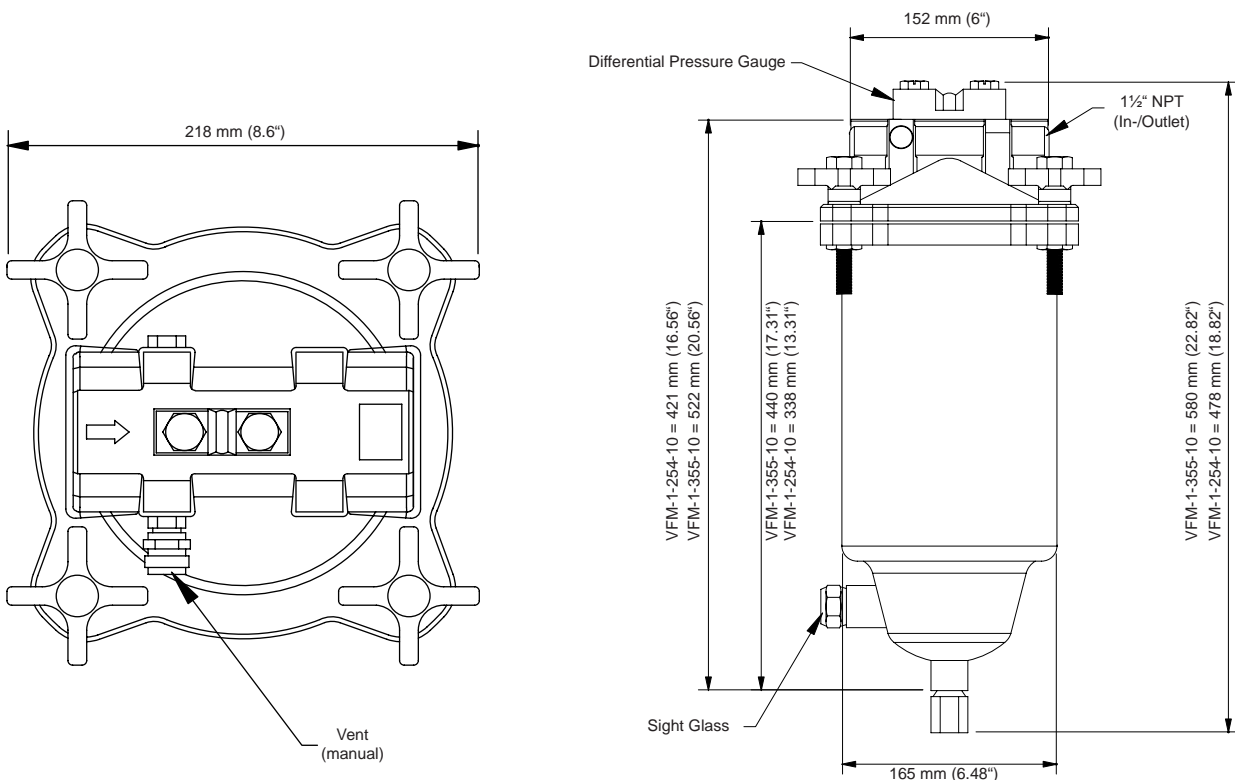


## VFM Series

### Standard Design

- Die-cast Aluminum Head
- Steel filter bowl housing
- Powder coated Components
- Cover with quick opening („Locking Ring Collar“ – no clamps)
- In-/Outlet 1 ½“ NPT
- 10 bar @ +50°C Maximum Design Pressure
- Manual Vent valve, Sight glass
- Manual Drain valve
- incl. 1 pce. Filter Monitor Element

### Dimensions in mm



minor dimension divergences reserved!

Wear- and Spare Parts	Wear part	Qty.	Article-No.
VFM-1-254-10		1	3 003 707
VFM-1-355-10		1	3 003 710
Differential Pressure Gauge (optional)		1	3 002 531
O-ring for Differential Pressure Gauge 20.5 x 3 (Viton®)		2	3 003 830
O-ring for Differential Pressure Gauge 9.52 x 1.78 (Viton®)		2	3 003 831
Cover Seal 158x5.3 (BUNA-N)	X	1	3 005 251
Cover Seal 158x5.3 (VITON®)	X	1	3 005 252
Filter Monitor Element Type MO6.01C1-254-1/6B	X	1	3 011 553
Filter Monitor Element Type MO6.01C1-355-1/6B	X	1	3 011 554

FAUDI Aviation GmbH Phone: +49 6428 4465-275  
 Scharnhorststrasse 7 B Fax: +49 6428 4465-231  
 D-35260 Stadtallendorf E-Mail: contact@faudi-aviation.com  
 Germany Web: www.faudi-aviation.com



# Sieve Basket Strainer



# Sieve Basket Strainer Series 11

## Product Description

The FAUDI Aviation Single Sieve basket strainer Type 11 is used for the filtration of fluids and gases. The Sieve basket strainer consists of a perforated sieve basket made of Carbon steel, Stainless Steel or other materials, depending on the fuels or gases being filtered.

## Installations

- The Sieve basket strainer can be installed as a suction or pressure filter
- Verticale or horizontal applications possible
- For both installations a shut-off valve must be fitted at the inlet/outlet connection and the drain point.

## Applications

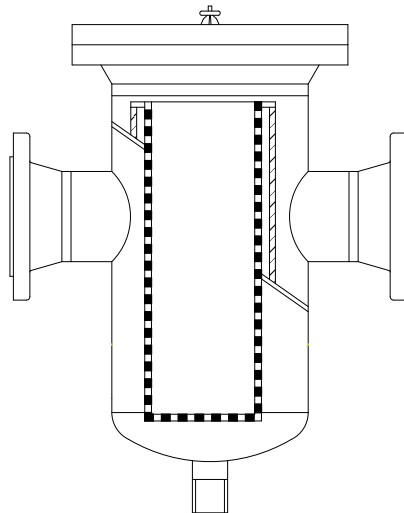
- As a strainer in pipework systems for the separation of unwanted contaminations (rust, dirt)
- Prefilter for oil and gas pipelines
- Protection Filter for meters, valves, pumps and safety devices

## Technical Details

- Change out differential pressure: 1 bar (higher in case of special designs)
- Operating temperature: -10 / +50 °C (depending on model type)
- Design pressure: depending on model type

## Standard Design

- Vertical or horizontal cylindrical housing with a dished bottom
- Depending on the size and pressure rating, Type 11 is fitted with a flat or dished cover
- Standard flange joint fastened with hexagonal bolts and nuts to secure the cover
- Alternative cover closures are possible (See page 2)



SIEVE BASKET STRAINER

FAUDI Aviation GmbH	Phone:	+49 6428 4465-275
Scharnhorststrasse 7 B	Fax:	+49 6428 4465-231
D-35260 Stadtallendorf	E-Mail:	contact@faudi-aviation.com
Germany	Web:	www.faudi-aviation.com

**FAUDI**  
● ● ● **aviation**  
quality guarantees safety

## Sieve Basket Strainer Series 11

### Sample of Identification

Model No.	Connections DN	Filter-area (cm <sup>2</sup> )
11.10	40	300
11.13	65	640
11.19	100	1.250
11.27	150	3.200
11.36	200	4.800
11.45	250	5.800
11.55	300	10.000
11.60	350	14.000
11.70	400	18.000
11.85	500	26.500
11.00	600	33.500
11.01	700	37.500

Cover Closure		Material		Pressure Range (bar)		Connections DN		Insert		Mesh	
1	Standard	0	Carbon steel	0	6	02	20	1	1.4541	0	Without
3	Eye swing bolts	1	1.4541	1	10	03	32	2	1.4571	1	1.4541
4	Segmental bolt closure	2	1.4571	2	16	04	40	3	Monel	2	1.4571
7	Patent quick opening closure with cover davit	3	Carbon steel (coated)	3	25	05	50	4	Special materials	3	Monel
		6	Special materials	4	40	06	65			4	Special materials
				5	64	08	80				
				6	100**	10	100				
				7	160**	12	125				
						15	150				
						20	200				
						25	250				
						30	300				
						35	350				
						40	400				
						50	500				
11.13	1.	0		1.		05		1		1	
Sample of Article Code = Model 11.131.01.0511											

FAUDI Aviation GmbH Phone: +49 6428 4465-275  
 Scharnhorststrasse 7 B Fax: +49 6428 4465-231  
 D-35260 Stadtallendorf E-Mail: contact@faudi-aviation.com  
 Germany Web: www.faudi-aviation.com





# Sieve Basket Strainer Series 21

## Product Description

The FAUDI Aviation Single Sieve basket strainer Type 21 is used for the filtration of fluids and gases. The Sieve basket strainer consists of a perforated sieve basket made of Carbon steel, Stainless Steel or other materials, depending on the fuels or gases being filtered

## Installations

- The Sieve basket strainer can be installed as a suction or pressure filter
- Verticale or horizontal applications possible
- For both installations a shut-off valve must be fitted at the inlet/outlet connection and the drain point

## Applications

- As a strainer in pipework systems for the separation of unwanted contaminations (rust, dirt)
- Prefilter for oil and gas pipelines
- Protection Filter for meters, valves, pumps and safety devices

## Technical Details

- Change out on a differential pressure of 1 bar (higher in case of special designs)
- Operating temperature: -10C / +50°C (depending on model type)
- Design pressure: depending on model type

## Standard Design

- Vertical or horizontal cylindrical housing with a dished bottom
- Depending on the size and pressure rating, Type 11 is fitted with a flat or dished cover
- flange joint on housing opening (cover)

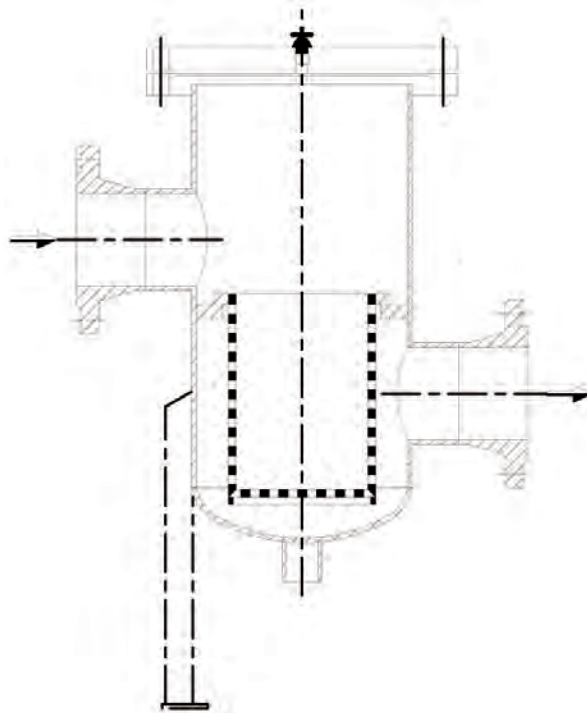
SIEVE BASKET STRAINER

FAUDI Aviation GmbH	Phone:	+49 6428 4465-275
Scharnhorststrasse 7 B	Fax:	+49 6428 4465-231
D-35260 Stadtallendorf	E-Mail:	contact@faudi-aviation.com
Germany	Web:	www.faudi-aviation.com



## Sieve Basket Strainer Series 21

### Sample of Identification



Model No.	Connections DN	Filter-area (m²)
21.08	40	0,04
21.10	50	0,07
21.13	80	0,14
21.19	100	0,22
21.27	150	0,48
21.36	200	0,80
21.45	250	1,20
21.55	300	1,60

	Cover Closure		Material		Press. Range bar		Connections DN		Insert		Mesh	
	1	Standard	0	Carbon steel	0	6	02	20	1	1.4541	0	Without
	3	Eye swing bolts	1	1.4541	1	10	03	32	2	1.4571	1	1.4541
	4	Segmental bolt closure	2	1.4571	2	16	04	40	3	Monel	2	1.4571
	7	Patent quick opening closure with cover davit	3	Carbon steel (coated)	3	25	05	50	4	Special materials	3	Monel
			6	Special materials	4	40	06	65			4	Special materials
					5	64	08	80				
					6	100**	10	100				
					7	160**	12	125				
							15	150				
							20	200				
							25	250				
							30	300				
21.13	1.		0		1.		05		1		1	

Sample of Article Code = Model 21.131.01.0511

FAUDI Aviation GmbH Scharnhorststrasse 7 B D-35260 Stadtallendorf Germany	Phone: +49 6428 4465-275 Fax: +49 6428 4465-231 E-Mail: contact@faudi-aviation.com Web: www.faudi-aviation.com	<b>FAUDI</b> aviation quality guarantees safety
--	---	---

# Clay Filter



## Applications

The main function of a clay filter is to remove unwanted surface active surfactants, colouring and other additives which may be present from the refining process or during transportation of Jet Fuel.

These unwanted surfactants can accumulate in the coalescer elements of a filter/water separator and reduce their water removal efficiency. Therefore such clay filter vessels are normally installed in front of a filter/water separator vessel.

To enable optimum performance of the adsorption process of the Attapul-gas Clay, the recommended flow rate per element is 25 l/min.



## Construction (standard version)

Design pressure: 10 bar  
Design temperature: -10 to +50° C  
Design code: AD 2000 (German regulations for pressure vessels)  
Material of construction: Carbon steel  
Internal coating: acc. to MIL-C-4556 (latest Edition)  
Other design pressures as well as other materials like aluminium or stainless steel are available upon request.

## Accessories

For improved operation FAUDI Aviation Micro Filter may fitted with some or all of the following accessories:

- Automatic air eliminator
- Pressure relief valve
- Differential pressure gauge

## Concept & Performance

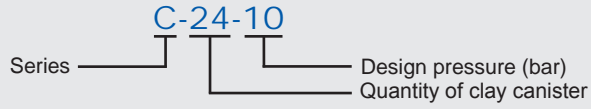
- Vertical mode
- Standard range - for optimum cost/performance ratio
- Quick delivery
- International standards
  - ▶ ASME Code, Section VIII with or without U-stamp
  - ▶ BS 5500
  - ▶ Stoomwezen
  - ▶ DNV, etc.

FAUDI Aviation GmbH	Phone:	+49 6428 4465-275
Scharnhorststrasse 7 B	Fax:	+49 6428 4465-231
D-35260 Stadtallendorf	E-Mail:	contact@faudi-aviation.com
Germany	Web:	www.faudi-aviation.com

**FAUDI**  
● ● ● **aviation**  
quality guarantees safety

# C Series

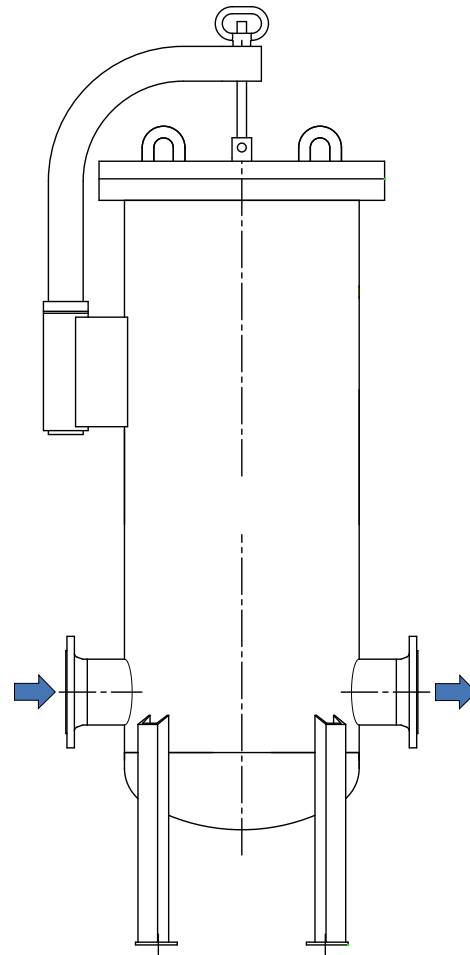
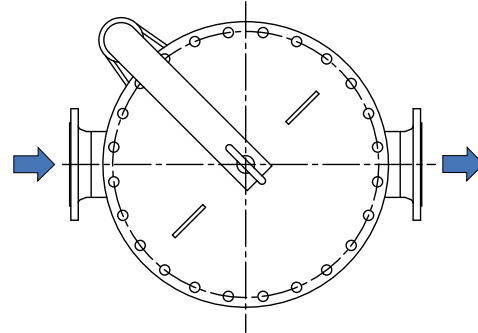
## Sample of marking:



## Technical Details

- for stationary and mobile applications
- for Jet A1, JP 1, JP 4, JP 8, Kerosene
- maximale flow rates up to 3.300 l/min, higher flow rates on request

Model No.	Element	Flow rates	
	Qty.	l/min	USGPM
C- 9	9	225	59
C- 12	12	300	79
C- 18	18	450	119
C- 21	21	525	139
C- 24	24	600	159
C- 33	33	825	218
C- 39	39	975	258
C- 51	51	1,275	337
C- 63	63	1,575	416
C- 87	87	2,175	575
C-108	108	2,700	713
C-132	132	3,300	872



FAUDI Aviation GmbH  
 Scharnhorststrasse 7 B  
 D-35260 Stadtallendorf  
 Germany

Phone: +49 6428 4465-275  
 Fax: +49 6428 4465-231  
 E-Mail: contact@faudi-aviation.com  
 Web: www.faudi-aviation.com

